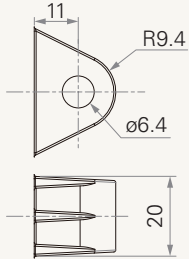
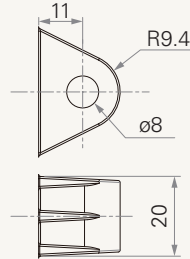


## Rear Attachment (mm)

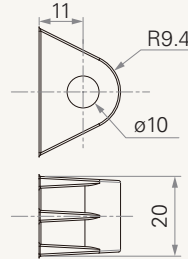
1 = Aluminum casting, hole 6.4, one piece casting with gear box



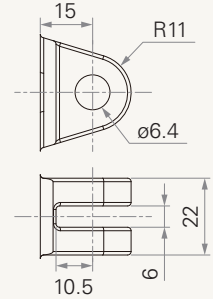
2 = Aluminum casting, hole 8.0, one piece casting with gear box



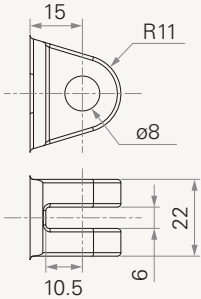
3 = Aluminum casting, hole 10.0, one piece casting with gear box



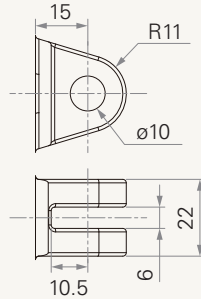
4 = Aluminum casting, U clevis, slot 6.0, depth 10.5, hole 6.4, one piece casting with gear box



5 = Aluminum casting, U clevis, slot 6.0, depth 10.5, hole 8.0, one piece casting with gear box

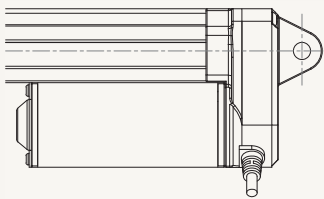


6 = Aluminum casting, U clevis, slot 6.0, depth 10.5, hole 10.0, one piece casting with gear box



## Direction of Rear Attachment (Counterclockwise)

1 = 90°



2 = 0°

