




it RULLI PER TRANSPALLET  
gb PALLET TRUCK ROLLERS  
d GABELHUBWAGEN ROLLEN  
fr GALETS DE TRANSPALLETES


**59호**  
SERIES



85 mm	600-1100 daN 4 km/h	400-560 daN 6 km/h	480-880 daN 6 km/h
-------	------------------------	-----------------------	-----------------------

**PAGE 4**


**74**  
SERIES



80-85 mm	410-500 daN 6 km/h	400-1000 daN 4 km/h	320-800 daN 6 km/h
----------	-----------------------	------------------------	-----------------------

**PAGE 14**

**78**  
SERIES




82 mm	390-525 daN 6 km/h	450-700 daN 4 km/h	-15/+80 °C
-------	-----------------------	-----------------------	------------

**PAGE 17**

it RUOTE STABILIZZATRICI  
gb STABILISING WHEELS  
d STÜTZROLLEN  
fr ROUES STABILISATRICES

**58호**  
SERIES




100-200 mm	220-380 daN 6 km/h	380-1000 daN 4 km/h	300-800 daN 6 km/h
------------	-----------------------	------------------------	-----------------------

**PAGE 19**

es RODILLOS PARA TRANSPALLETAS  
ru РОЛИКИ ДЛЯ ГИДРАВЛИЧЕСКИХ ТЕЛЕЖЕК  
pt ROLETES PARA PORTA-PALETAS


**75**  
SERIES



35-120 mm	130-510 daN 6 km/h	100-1150 daN 4 km/h	170-640 daN 6 km/h
-----------	-----------------------	------------------------	-----------------------

**PAGE 6**


**76**  
SERIES



40-82 mm	325-650 daN 6 km/h	700-1200 daN 4 km/h	-30/+80 °C
----------	-----------------------	------------------------	------------

**PAGE 15**

**79**  
SERIES




80-85 mm	200-620 daN 6 km/h	200-650 daN 4 km/h	160-570 daN 6 km/h
----------	-----------------------	-----------------------	-----------------------

**PAGE 18**

es RUEDAS ESTABILIZADORAS  
ru ОПОРНЫЕ КОЛЕСА  
pt RODAS ESTABILIZADORAS


**58호**  
SERIES



100-200 mm	220-400 daN 6 km/h	300-1000 daN 4 km/h	300-800 daN 6 km/h
------------	-----------------------	------------------------	-----------------------

**PAGE 20**


**63호**  
SERIES



100-200 mm	220-380 daN 6 km/h	380-1000 daN 4 km/h	300-800 daN 6 km/h
------------	-----------------------	------------------------	-----------------------

**PAGE 21**


**64**  
SERIES



100-200 mm	220-400 daN 6 km/h	380-1000 daN 4 km/h	300-800 daN 6 km/h
------------	-----------------------	------------------------	-----------------------

**PAGE 22**


**65호**  
SERIES



100-200 mm	370-350 daN 6 km/h	350-800 daN 4 km/h	300-640 daN 6 km/h
------------	-----------------------	-----------------------	-----------------------

**PAGE 23**

**62호**  
SERIES




100-250 mm	300-700 daN 6 km/h	300-800 daN 4 km/h	300-800 daN 6 km/h
------------	-----------------------	-----------------------	-----------------------

**PAGE 24**

it RUOTE PER TRANSPALLET  
gb PALLET TRUCK WHEELS  
d GABELHUBWAGEN RÄDER  
fr ROUES DE TRANSPALLETES


**68**  
SERIES



150-200 mm	315-650 daN 6 km/h	730-900 daN 4 km/h	-30/+80 °C
------------	-----------------------	-----------------------	------------

**PAGE 25**


**72호**  
SERIES



160-250 mm	250-500 daN 6 km/h	300-500 daN 4 km/h	-20/+70 °C
------------	-----------------------	-----------------------	------------

**PAGE 26**

**65호**  
SERIES



150-200 mm	330-500 daN 6 km/h	600-850 daN 4 km/h	-20/+80 °C
------------	-----------------------	-----------------------	------------

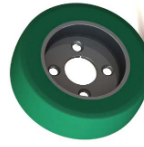
**PAGE 27**

es RUEDAS PARA TRANSPALLETAS  
ru КОЛЕСА ДЛЯ ГИДРАВЛИЧЕСКИХ ТЕЛЕЖЕК  
pt RODAS PARA PORTA-PALETAS

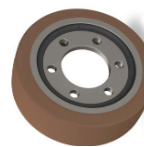
it RUOTE MOTRICI  
gb DRIVE WHEELS  
d ANTRIEBSRÄDER  
fr ROUES MOTRICES



**PAGE 28**



**PAGE 31**



**PAGE 32**

es RUEDAS MOTRIZES  
ru ПРИВОДНОЕ КОЛЕСА  
pt RODAS DE TRACÇÃO

it SOLUZIONI PERSONALIZZATE  
gb CUSTOMISED SOLUTIONS  
d SÖNDERLÖSUNGEN  
fr SOLUTIONS PERSONNALISÉES



**PAGE 35**

es MODELOS PERSONALIZADOS  
ru КОЛЕСА ДЛЯ ГИДРАВЛИЧЕСКИХ ТЕЛЕЖЕК  
pt MODELOS PERSONALIZADOS



**it** **Tellure Rôta, da 70 anni, garanzia di qualità made in Italy**

La produzione di ruote e supporti è realizzata nei 3 stabilimenti di Formigne, su una superficie coperta di 15.000 mq. Qui tecnologia e competenza del personale si uniscono per produrre seguendo standard certificati e garantire la qualità dei prodotti. L'azienda opera in 70 Paesi servendo oltre 2.000 clienti.

**gb** **Tellure Rôta, 70 years of guaranteed "Made in Italy" quality**

The products are manufactured in three plants based in Formigne (Northern Italy), on a covered surface of 15,000 square metres. Here, technology and the skills of the staff combine to make products according to certified standards, which guarantee consistency of quality. The company operates in 70 Countries with over 2,000 customers.

**d** **Tellure Rôta, seit 70 Jahren Garantie für Qualität Made in Italy**

Die Produktion erfolgt in den 3 Werken in Formigne (im nord Italien), auf einer abgedeckten Oberfläche von 15'000 Quadratmetern. Hier treffen sich Technologie und Erfahrung des Personals, um nach zertifizierten Standards zu produzieren und eine gleich bleibende Qualität zu gewährleisten. In 70 Ländern und mit über 2000 Kunden tätig.

**fr** **Depuis 70 ans, Tellure Rôta offre la garantie de qualité made in Italy**

La production de roues et roulettes est réalisée dans les 3 établissements de Formigne (dans le nord de l'Italie), sur une surface couverte de 15 000 mètres carrés. La technologie et la compétence du personnel s'y associent pour assurer une production conforme à des normes certifiées et garantir la qualité des produits. Aujourd'hui, son réseau de vente, regroupant plus de 2000 clients, s'étend dans 70 pays.

**es** **Tellure Rôta, una garantía de calidad Italiana desde hace 70 años**

La producción se realiza en tres países industriales localizadas en Formigne (Norte de Italia), las cuales tienen una superficie cubierta de 15.000 metros cuadrados. Allí, tecnología y competencia del personal se unen para producir en conformidad con los estándares certificados, así garantizando consistencia en la calidad de los productos. La empresa está presente en 70 países con más de 2.000 clientes.

**ru** **Вот уже более 70 лет Tellure Rôta - это гарантия качества made in Italy**

Производство колёс и кронштейнов производится в 3 цехах г. Формигине (в Северной Италии), общая крытая площадь которых, составляет 15 000 кв.м. Технологии и опыт персонала объединяются, чтобы производить согласно стандартам качества и обеспечения качества продукции. На сегодняшний день, сеть сбыта, которая включает более 2 000 клиентов, присутствует более чем в 70 странах.

**pt** **Tellure Rôta, uma garantia de qualidade Italiana desde 70 anos**

A produção realiza-se em três estabelecimentos industriais localizados em Formigne (Norte da Italia), com mais de 15.000 metros quadrados de superfície coberta. Aqui, tecnologia e capacidade do pessoal da empresa juntam-se para produzir em conformidade com os certificados standard, assim garantindo consistência na qualidade dos produtos. A empresa está presente em 70 países com mais de 2.000 clientes.



**it**

**TR Lab Test & Research: dove la ricerca diventa soluzione**  
Per garantire ai propri clienti progetti d'eccellenza, Tellure Rôta ha scelto di qualificare ed affiancare al reparto di produzione il laboratorio Test & Research, un laboratorio di ricerca dotato di autonomia operativa ed accreditato dal 2011. Il laboratorio è dotato di competenze e strumentazioni necessarie per sviluppare e collaudare nuove soluzioni per materiali e prodotti.

**gb**

**TR Lab Test & Research: where research becomes innovative solutions**  
Tellure Rôta production is flanked and supported by a laboratory of research in order to guarantee excellence in project design. The TR Lab is provided with the necessary know-how and equipments to develop and test new materials and new product solutions. The Lab is also formally accredited since 2011 and has its own operational autonomy.

**d**

**TR Lab Test & Research: wo Forschung zu Innovation wird**  
Um ihren Kunden leistungsfähige Projekte zu gewährleisten, hat Tellure Rôta die Produktion mit einem selbstständigen Forschungslabor unterstützt. Das Labor ist seit 2011 anerkannt und befugt über alle nötige Kenntnisse und Messapparate um neue Lösungen für Materialien und Produkte zu entwickeln.

**fr**

**TR Lab Test & Research: Quand la recherche devient solution**  
Afin d'offrir des projets d'excellence à ses clients, Tellure Rôta a choisi de qualifier un laboratoire de recherche entièrement autonome d'un point de vue opérationnel et accrédité depuis 2011, le laboratoire Test & Research, afin d'assurer ses départements de production. Le laboratoire renferme les compétences nécessaires pour développer et mettre au point de nouvelles solutions en termes de matériaux et de produits.

**es**

**TR Lab Test & Research: donde la investigación se convierte en innovación**  
La producción de Tellure Rôta cuenta con los servicios y el respaldo del laboratorio de investigación para garantizar la excelencia de sus proyectos. El TR Lab tiene el conocimiento técnico y el equipamiento necesario para desarrollar y probar nuevos materiales y nuevas soluciones de producto. El laboratorio está certificado formalmente desde 2011 y tiene su propia autonomía operativa.

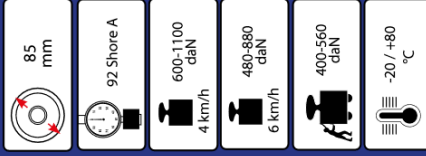
**ru**

**TR Lab Test & Research: Там где поиск становится решением**  
Чтобы обеспечить для собственной клиентуры блестящие разработки, компания Tellure Rôta решила квалифицировать лабораторию Test & Research в помощь производственным подразделениям. Исследовательская лаборатория имеет оперативную автономность и аккредитована в 2011 году.

**pt**

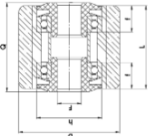
**TR Lab Test and Research: onde a pesquisa torna-se inovação**  
A produção da Tellure Rôta dispõe dos serviços e do respaldo do laboratório de pesquisa para garantir a excelência do seus projetos. O TR Lab tem o conhecimento técnico e o equipamento necessário para desenvolver e provar novos materiais e novas soluções de produto. O laboratório está certificado formalmente desde 2011 e tem sua própria autonomia operativa.





it RULLI IN POLIURETANO "TR-POWERHIGH" PER TRANSPALLET ELETTRICI, NUCLEO IN ACCIAIO, CON LABIRINTI IN MATERIALE TERMOPLASTICO  
 gb "TR-POWERHIGH" POLYURETHANE ROLLERS FOR ELECTRIC PALLET TRUCKS, STEEL CENTRE, WITH PLASTIC LABYRINTHS

d ROLLEN AUS "TR-POWERHIGH" POLYURETHAN FÜR ELEKTRISCHE GABELHUGWAGEN, MIT STAHLRADKÖRPER UND KUNSTSTOFF-LABYRINTDICHTUNGEN  
 fr GALETTES EN POLYURETHANE "TR-POWERHIGH" POUR TRANSPALETTE ÉLECTRIQUES AVEC CORPS EN ACIER ET LABYRINTHES EN MATIÈRE PLASTIQUE  
 es RODILLOS PARA TRANSPALLETAS ELÉCTRICAS DE POLIURETANO "TR-POWERHIGH", NUCLEO DE ACERO, CON LABERINTOS DE MATERIAL PLÁSTICO  
 ru ПОЛИУРЕТАНОВЫЕ ВАЛКИ "TR-POWERHIGH" ДЛЯ ЭЛЕКТРИЧЕСКИХ ТЕЛЕЖЕК, СТАЛЬНОЙ ЯДЕР. С ЛАБИРИНТАМИ ИЗ ТЕРМОПЛАСТИЧЕСКОГО МАТЕРИАЛА  
 pt ROLETES EM POLIURETANO "TR-POWERHIGH" PARA PORTA-PALETAS ELÉTRICOS, NUCLEO EM AÇO, COM LABERINTOS DE MATERIAL TERMOPLÁSTICO

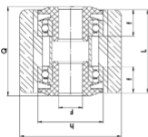


CON LABIRINTI IN MATERIALE TERMOPLASTICO  
 WITH PLASTIC LABYRINTHS  
 MIT KUNSTSTOFF-LABYRINTDICHTUNGEN  
 AVEC LABYRINTHES EN MATIÈRE PLASTIQUE  
 CON LABERINTOS DE MATERIAL PLÁSTICO  
 ЛАБИРИНТАМИ ИЗ ТЕРМОПЛАСТИЧЕСКОГО МАТЕРИАЛА  
 COM LABERINTOS DE MATERIAL TERMOPLÁSTICO

D	L	kg	CODE	kg	CODE	F	Bearing type	Q	h	f	Static	4 km/h	6 km/h	Suggested for
mm	mm					mm		mm	mm	mm	daN	daN	daN	
85	60	0,84	593151F12	0,54	595151	12	6006 2RS	65	55	22	900	400	600	480
85	60	0,84	593151F17	0,54	595151	17	6006 2RS	65	55	22	900	400	600	480
85	60	0,84	593151F20	0,54	595151	20	6006 2RS	65	55	22	900	400	600	480
85	60	0,82	593151F25	0,54	595151	25	6006 2RS	65	55	22	900	400	600	480
85	70	1,04	593153F12	0,72	595153	12	6006 2RS	75	55	22	1000	450	700	560
85	70	1,03	593153F17	0,72	595153	17	6006 2RS	75	55	22	1000	450	700	560
85	70	1,03	593153F20	0,72	595153	20	6006 2RS	75	55	22	1000	450	700	560
85	70	1,02	593153F25	0,72	595153	25	6006 2RS	75	55	22	1000	450	700	560
85	75	1,12	593154F12	0,79	595154	12	6006 2RS	80	55	22	1000	450	750	600
85	75	1,11	593154F17	0,79	595154	17	6006 2RS	80	55	22	1000	450	750	600
85	75	1,11	593154F20	0,79	595154	20	6006 2RS	80	55	22	1000	450	750	600
85	75	1,10	593154F25	0,79	595154	25	6006 2RS	80	55	22	1000	450	750	600
85	80	1,19	593155F12	0,86	595155	12	6006 2RS	85	55	22	1100	500	800	640
85	80	1,19	593155F17	0,86	595155	17	6006 2RS	85	55	22	1100	500	800	640
85	80	1,19	593155F20	0,86	595155	20	6006 2RS	85	55	22	1100	500	800	640
85	80	1,18	593155F25	0,86	595155	25	6006 2RS	85	55	22	1100	500	800	640
85	85	1,27	593156F12	0,92	595156	12	6006 2RS	90	55	22	1100	500	850	680
85	85	1,26	593156F17	0,92	595156	17	6006 2RS	90	55	22	1100	500	850	680
85	85	1,26	593156F20	0,92	595156	20	6006 2RS	90	55	22	1100	500	850	680
85	85	1,25	593156F25	0,92	595156	25	6006 2RS	90	55	22	1100	500	850	680
85	90	1,34	753157F12	0,99	755157	12	6006 2RS	95	55	22	1200	525	900	720
85	90	1,34	753157F17	0,99	755157	17	6006 2RS	95	55	22	1200	525	900	720
85	90	1,34	753157F20	0,99	755157	20	6006 2RS	95	55	22	1200	525	900	720
85	90	1,33	753157F25	0,99	755157	25	6006 2RS	95	55	22	1200	525	900	720

it RULLI IN POLIURETANO "TR-POWERHIGH" PER TRANSPALLET ELETTRICI, NUCLEO IN ACCIAIO, CON LABIRINTI IN MATERIALE TERMOPLASTICO  
 gb "TR-POWERHIGH" POLYURETHANE ROLLERS FOR ELECTRIC PALLET TRUCKS, STEEL CENTRE, WITH PLASTIC LABYRINTHS

d ROLLEN AUS "TR-POWERHIGH" POLYURETHAN FÜR ELEKTRISCHE GABELHUGWAGEN, MIT STAHLRADKÖRPER UND KUNSTSTOFF-LABYRINTDICHTUNGEN  
 fr GALETTES EN POLYURETHANE "TR-POWERHIGH" POUR TRANSPALETTE ÉLECTRIQUES AVEC CORPS EN ACIER ET LABYRINTHES EN MATIÈRE PLASTIQUE  
 es RODILLOS PARA TRANSPALLETAS ELÉCTRICAS DE POLIURETANO "TR-POWERHIGH", NUCLEO DE ACERO, CON LABERINTOS DE MATERIAL PLÁSTICO  
 ru ПОЛИУРЕТАНОВЫЕ ВАЛКИ "TR-POWERHIGH" ДЛЯ ЭЛЕКТРИЧЕСКИХ ТЕЛЕЖЕК, СТАЛЬНОЙ ЯДЕР. С ЛАБИРИНТАМИ ИЗ ТЕРМОПЛАСТИЧЕСКОГО МАТЕРИАЛА  
 pt ROLETES EM POLIURETANO "TR-POWERHIGH" PARA PORTA-PALETAS ELÉTRICOS, NUCLEO EM AÇO, COM LABERINTOS DE MATERIAL TERMOPLÁSTICO



CON LABIRINTI IN MATERIALE TERMOPLASTICO  
 WITH PLASTIC LABYRINTHS  
 MIT KUNSTSTOFF-LABYRINTDICHTUNGEN  
 AVEC LABYRINTHES EN MATIÈRE PLASTIQUE  
 CON LABERINTOS DE MATERIAL PLÁSTICO  
 ЛАБИРИНТАМИ ИЗ ТЕРМОПЛАСТИЧЕСКОГО МАТЕРИАЛА  
 COM LABERINTOS DE MATERIAL TERMOPLÁSTICO

D	L	kg	CODE	kg	CODE	F	Bearing type	Q	h	f	Static	4 km/h	6 km/h	Suggested for
mm	mm					mm		mm	mm	mm	daN	daN	daN	
85	100	1,50	593159F12	1,13	595159	12	6006 2RS	105	55	22	1300	540	1000	800
85	100	1,49	593159F17	1,13	595159	17	6006 2RS	105	55	22	1300	540	1000	800
85	100	1,49	593159F20	1,13	595159	20	6006 2RS	105	55	22	1300	540	1000	800
85	100	1,48	593159F25	1,13	595159	25	6006 2RS	105	55	22	1300	540	1000	800
85	105	1,57	593160F12	1,19	595160	12	6006 2RS	110	55	22	1300	540	1050	840
85	105	1,56	593160F17	1,19	595160	17	6006 2RS	110	55	22	1300	540	1050	840
85	105	1,56	593160F20	1,19	595160	20	6006 2RS	110	55	22	1300	540	1050	840
85	105	1,55	593160F25	1,19	595160	25	6006 2RS	110	55	22	1300	540	1050	840
85	110	1,65	593161F12	1,26	595161	12	6006 2RS	115	55	22	1400	560	1100	880
85	110	1,64	593161F17	1,26	595161	17	6006 2RS	115	55	22	1400	560	1100	880
85	110	1,64	593161F20	1,26	595161	20	6006 2RS	115	55	22	1400	560	1100	880
85	110	1,63	593161F25	1,26	595161	25	6006 2RS	115	55	22	1400	560	1100	880



D	L	kg	CODE	kg	CODE	F	Bearing type	Q	h	f	Static	4 km/h	6 km/h	Suggested for
mm	mm					mm		mm	mm	mm	daN	daN	daN	
85	74	1,20	059007	0,99	059003	12	6006 2RS	75	55	22	1300	540	1000	800



it RULLI TRANSPALLET IN POLIURETANO "TR"; NUCLEO IN ACCIAIO

gb "TR" POLYURETHANE PALLET TRUCK ROLLERS WITH STEEL CENTRE

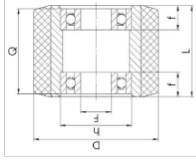
d GABELHUBWAGENROLLEN AUS "TR" POLYURETHAN MIT STAHLRADKÖRPER

fr GALETS DE TRANSPALETES EN POLYURETHANE "TR" AVEC CORPS EN ACIER

es RODILLOS PARA TRANSPALETAS DE POLIURETANO "TR" CON NUCLEO DE ACERO

ru РОЛИКИ ДЛЯ ГИДРАВЛИЧЕСКИХ ТЕЛЕЖЕК ИЗ ПОЛИУРЕТАНА "TR" С ОСНОВАНИЕМ ИЗ СТАЛИ

pt ROLETES EM POLIURETANO "TR" PARA PORTA-PALETAS; NÚCLEO EM AÇO



\* 3km/h

D	L	kg	CODE	kg	CODE	F	Bearing type	Q	h	f	Static	4 km/h	6 km/h	Suggested for
mm	mm					mm		mm	mm	mm	daN	daN	daN	
35	27	0,09	752099			6	6208 2RS	30	22	7		100*	-	
50	26	0,17	075080	0,08	075161	15	6202 ZZ	26	35	11		110*		
50	40	0,27	752100	0,18	754100	15	6202 ZZ	40	35	11		150*		
60	60	0,44	075719	0,35	075501	15	6202 ZZ	60	35	11	400	180	300	240
70	60	0,63	075905	0,50	075604	20	6004 ZZ	60	42	12	500	230	400	250
70	70	0,71	075285	0,51	075152	20	6204 2RS	70	47	14	550	260	450	300
70	70	0,70	075248	0,51	075152	20	6204 ZZ	70	47	14	550	260	450	300
75	32	0,39	075917	0,23	075105	25	6005 2RS	32	47	12	300	130	250	170
75	40	0,49	075180	0,30	075155	20	6204 ZZ	40	47	14	350	160	300	200
75	62	0,68	075148	0,49	075006	20	6204 ZZ	61,4	47	14,3	550	260	470	315
75	70	0,78	075139	0,56	075098	17	6303 ZZ	70	47	14	600	300	530	340
75	75	0,79	075945	0,60	075055	20	6204 ZZ	75	47	14	730	320	560	360
75	95	0,96	075769	0,77	075007	20	6204 ZZ	94,6	47	14,2	800	400	700	500
80	40	0,64	075952	0,44	754101	20	6204 2RS	40	47	14	400	200	350	235
80	40	0,64	752101	0,44	754101	20	6204 ZZ	40	47	14	400	200	350	235
80	50	0,76	075918	0,57	075293	20	6204 ZZ	50	47	14	500	260	400	275
80	54	0,81	075131	0,62	075130	20	6204 ZZ	54	47	14	550	300	430	300
80	55			0,47	075569				47	14	550	300	430	300
80	60	0,89	075168	0,69	075167	20	6204 ZZ	60	47	14	600	330	480	325
80	70	1,01	075207	0,81	754102	20	6204 2RS	70	47	14	700	390	560	375
80	70	1,01	752102	0,81	754102	20	6204 ZZ	70	47	14	700	390	560	375
80	70			0,80	075510				47	19	700	390	560	375
80	74			0,86	075553				47	14	750	400	590	480
80	75			0,87	075108				47	14	750	400	590	480
80	80	1,13	075704	0,94	075054	20	6204 ZZ	80	47	14	800	410	630	425
80	90	1,26	075994	1,06	754105	20	6204 2RS	90	47	14	900	430	700	470
80	90	1,25	752105	1,06	754105	20	6204 ZZ	90	47	14	900	430	700	470
82	50			0,38	075058				47	14	500	260	400	275

it

gb

d

fr

es

ru

pt

it RULLI TRANSPALLET IN POLIURETANO "TR"; NUCLEO IN ACCIAIO

gb "TR" POLYURETHANE PALLET TRUCK ROLLERS WITH STEEL CENTRE

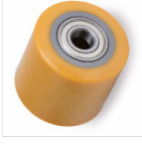
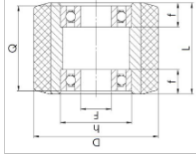
d GABELHUBWAGENROLLEN AUS "TR" POLYURETHAN MIT STAHLRADKÖRPER

fr GALETS DE TRANSPALETES EN POLYURETHANE "TR" AVEC CORPS EN ACIER

es RODILLOS PARA TRANSPALETAS DE POLIURETANO "TR" CON NUCLEO DE ACERO

ru РОЛИКИ ДЛЯ ГИДРАВЛИЧЕСКИХ ТЕЛЕЖЕК ИЗ ПОЛИУРЕТАНА "TR" С ОСНОВАНИЕМ ИЗ СТАЛИ

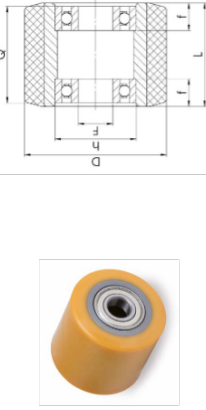
pt ROLETES EM POLIURETANO "TR" PARA PORTA-PALETAS; NÚCLEO EM AÇO



D	L	kg	CODE	kg	CODE	F	Bearing type	Q	h	f	Static	4 km/h	6 km/h	Suggested for	
mm	mm					mm		mm	mm	mm	daN	daN	daN		
82	60	0,90	752131	0,71	754131	20	6204 ZZ	60	47	14	600	360	480	325	
82	62	0,93	075860	0,73	075608	20	6204 ZZ	62	47	14	620	370	500	335	
82	62	0,92	075718	0,73	075521	20	6204 ZZ	58	47	16	620	370	500	335	
82	65			0,77	075517				47	14	650	380	530	350	
82	67			0,80	075587				47	13,5	670	390	540	355	
82	69	1,01	075931	0,81	075930	20	6204 2RS	62	47	17,5	690	400	550	360	
82	70	1,06	075729	0,84	075961	20	6204 2ZV	74	47	13	700	400	560	375	
82	70	1,03	075211	0,83	754132	20	6204 2RS	70	47	14	700	400	560	375	
82	70	1,03	752132	0,83	754132	20	6204 ZZ	70	47	14	700	400	560	375	
82	70			0,82	075042				47	18	700	400	560	375	
82	75	1,09	752143	0,89	754143	20	6204 ZZ	75	47	14	750	400	590	400	
82	78	1,13	075126	0,94	075125				78	47	14	780	400	610	415
82	78	1,13	075784	0,93	075584	20	6204 2RS	72	47	16	780	400	610	415	
82	85	1,22	752134	1,02	754134	20	6204 ZZ	85	47	14	850	425	670	450	
82	90	1,28	752135	1,09	754135	20	6024 ZZ	90	47	14	900	440	700	470	
82	90			1,07	075323				47	18	900	440	700	470	
82	95	1,34	075722	1,15	075962	20	6204 ZZ	95	47	14	950	450	750	500	
82	98			1,19	075586				47	14,5	1000	460	800	540	
82	100	1,40	075246	1,21	075026				96	47	16	1000	460	800	540
82	100	1,41	752137	1,21	754137	20	6204 ZZ	100	47	14	1000	460	800	540	
82	100	1,37	075770	1,21	754137	25	6005 ZZ	96	47	14	1000	460	800	540	
85	30	0,36	075852	0,56	075250	20	6204 ZZ		47	14	300	150	250	170	
85	40	0,67	752121	0,48	754121	20	6204 ZZ	40	47	14	400	200	350	235	
85	45			0,54	075902				47	15	450	230	380	255	
85	60	0,93	075037	0,74	075093	20	6204 ZZ	60	47	14	600	360	480	325	
85	70	1,06	752122	0,87	754122	20	6204 ZZ	70	47	14	700	400	560	375	
85	70			0,86	075100				47,05	17	700	400	560	375	
85	70	1,08	075135	0,86	075099	17	6303 ZZ	64	47	17	700	400	560	375	

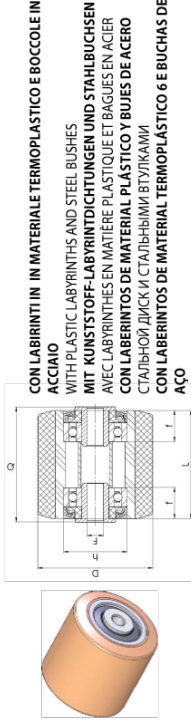
35-120 mm  
92 Shore A  
100-1750 daN  
4 km/h  
170-640 daN  
6 km/h  
130-510 daN  
-20 / +80 °C

- it RULLI TRASPALLET IN POLIURETANO "TR"; NUCLEO IN ACCIAIO
- gb "TR" POLYURETHANE PALLET TRUCK ROLLERS WITH STEEL CENTRE
- d GABELHUBWAGENROLLEN AUS "TR" POLYURETHAN MIT STAHLRADKÖRPER
- fr GALETS DE TRANSPALETES EN POLYURETHANE "TR" AVEC CORPS EN ACIER
- es RODILLOS PARA TRANSPALETAS DE POLIURETANO "TR" CON NUCLEO DE ACERO
- ru РОЛИКИ ДЛЯ ГИДРАВЛИЧЕСКИХ ТЕЛЕЖЕК ИЗ ПОЛИУРЕТАНА "TR" С ОСНОВАНИЕМ ИЗ СТАЛИ
- pt ROLETES EM POLIURETANO "TR" PARA PORTA-PALETAS; NÚCLEO EM AÇO



D	L	kg	CODE	F	Bearing type	Q	h	mm	mm	Static	4 km/h	6 km/h	Suggested for
85	70	1,07	075268	17	6303 ZZ	62	47	18	700	400	560	375	
85	75	1,03	075537			42	23	750	410	590	400	400	
85	75	1,15	075354			42	24	750	410	590	400	400	Atlet
85	75	1,13	752129	20	6204 ZZ	75	47	14	750	410	590	400	BT, Rock, Atlet
85	75	1,15	075736	17	6303 ZZ	73	47	15	750	410	590	400	BT
85	80	1,19	752123	20	6204 ZZ	80	47	14	800	430	630	425	Faba
85	80	1,16	752223	25	6205 ZZ	80	52	15	800	430	630	425	
85	80	0,85	075601			52	21	800	430	630	425	425	
85	85	1,26	752136	20	6204 ZZ	85	47	14	850	440	670	450	
85	85	1,22	075051	25	6005 2RS	81	47	14	850	440	670	450	
85	90	1,32	075929	20	6204 2RS	83	47	17,5	900	450	700	470	
85	90	1,33	075213	1,13	754125	90	47	14	900	450	700	470	
85	90	1,32	752125	1,13	754125	90	47	14	900	450	700	470	HyperRock, Lugtans, Vale
85	90			1,12	075120		47	17	900	450	700	470	Jungheinrich
85	90			1,12	075552		47	18	900	450	700	470	
85	95	1,39	752126	20	6204 ZZ	95	47	14	950	460	750	500	BT, Vale
85	100	1,45	752127	20	6204 ZZ	100	47	14	1000	475	800	540	BT, Vale, Atlet, Jungheinrich
85	100	1,42	075839	1,26	075963	104	47	13	1000	475	800	540	Jungheinrich, Crown
85	110	1,59	075179	1,39	075107	110	47	14	1100	510	890	600	Jungheinrich
85	110	1,55	075772	1,39	075107	106	47	14	1100	510	890	600	
85	115	1,62	075933	1,46	075560	113	47	13	1150	510	950	640	
98	50	1,29	075602	1,07	075964	54	47	13	560	200	500	400	Jungheinrich, Still, Linde, BT, Rock, Compilar
100	40	1,24	075223	1,05	075222	40	47	14	500	180	400	320	
100	40			0,95	075176		52	15	500	180	400	320	
100	46	1,10	075119	0,80	075094	50	47	16	560	200	460	370	OMG
120	50			075255		52	15	650	230	550	440	440	

- it RULLI TRASPALLET IN POLIURETANO "TR"; NUCLEO IN ACCIAIO
- gb "TR" POLYURETHANE PALLET TRUCK ROLLERS WITH STEEL CENTRE, WITH PLASTIC LABYRINTHS AND STEEL BUSHES
- d GABELHUBWAGENROLLEN AUS "TR" POLYURETHAN MIT STAHLRADKÖRPER, MIT KUNSTSTOFF-LABYRINTHDICHTUNGEN UND STAHLBUCHSEN
- fr GALETS DE TRANSPALETES EN POLYURETHANE "TR" AVEC CORPS EN ACIER, AVEC LABYRINTHES EN MATIÈRE PLASTIQUE ET BAGUES EN ACIER
- es RODILLOS PARA TRANSPALETAS DE POLIURETANO "TR" CON NUCLEO DE ACERO, CON LABERINTOS DE MATERIAL PLÁSTICO Y BUJES DE ACERO
- ru РОЛИКИ ДЛЯ ГИДРАВЛИЧЕСКИХ ТЕЛЕЖЕК ИЗ ПОЛИУРЕТАНА "TR" С ОСНОВАНИЕМ ИЗ СТАЛИ, СТАЛЬНОЙ ДИСК И СТАЛЬНЫМИ ВТУЛКАМИ
- pt ROLETES EM POLIURETANO "TR" PARA PORTA-PALETAS; NÚCLEO EM AÇO, COM LABERINTOS DE MATERIAL TERMOPLÁSTICO E BUCHAS DE AÇO

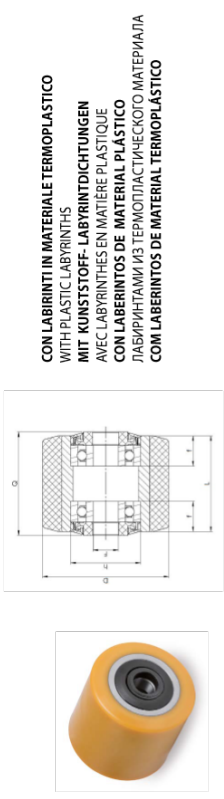


D	L	kg	CODE	F	Bearing type	Q	h	mm	mm	Static	4 km/h	6 km/h	Suggested for
82	82	1,27	075908	12	6204 ZZ	87	47	23	800	415	630	425	Crown
85	60	1,02	075828	12	6204 ZZ	65	47	23	600	360	480	325	Linde
85	70	1,15	075725	12	6204 ZZ	75	47	23	700	400	560	375	Jungheinrich
85	74	1,20	075926	13	6204 ZZ	75	47	25	750	410	590	400	BT
85	80	1,28	075794	12	6204 ZZ	85	47	23	800	430	630	425	Linde
85	85	1,35	075819	12	6204 ZZ	90	47	23	850	440	670	450	Linde, Jungheinrich
85	100	1,54	075793	12	6204 ZZ	105	47	23	1000	475	800	540	Linde, Jungheinrich
85	105	1,61	075810	12	6204 ZZ	110	47	23	1050	490	850	570	Linde

35-120 mm  
92 Shore A  
100-1750 daN  
4 km/h  
170-640 daN  
6 km/h  
130-510 daN  
-20 / +80 °C

35-120 mm  
92 Shore A  
100-1150 daN  
4 km/h  
170-640 daN  
6 km/h  
130-510 daN  
-20/+80 °C

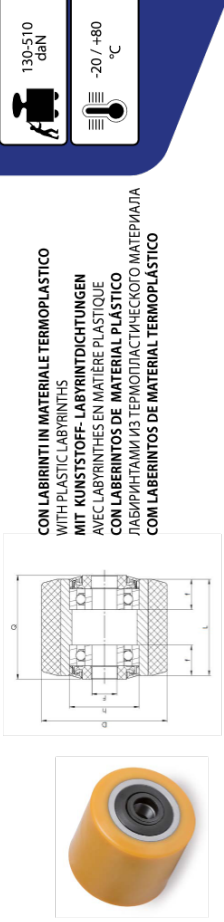
it RULLI TRASPALLET IN POLIURETANO "TR", NUCLEO IN ACCIAIO,  
CON LABIRINTI IN MATERIALE TERMOPLASTICO  
gb "TR" POLYURETHANE PALLET TRUCK ROLLERS WITH STEEL CENTRE,  
WITH POLYAMIDE PLASTIC LABYRINTHS  
d GABELHUBWAGENROLLEN AUS "TR" POLYURETHAN MIT STAHLRADKÖRPER,  
MIT KUNSTSTOFF-LABYRINTHDICHTUNGEN  
fr GALETS DE TRANSPALLETES EN POLYURETHANE "TR" AVEC CORPS EN ACIER,  
AVEC LABYRINTHES EN MATIÈRE PLASTIQUE  
es RODILLOS PARA TRANSPALETAS DE POLIURETANO "TR" CON NUCLEO DE ACERO,  
CON LABERINTOS DE MATERIAL PLÁSTICO  
ru РОЛКИ ДЛЯ ГИДРАВЛИЧЕСКИХ ТЕЛЕЖЕК ИЗ ПОЛИУРЕТАНА "TR"  
С ОСНОВАНИЕМ ИЗ СТАЛИ, С ЛАБИРИНТАМИ ИЗ ТЕРМОПЛАСТИЧЕСКОГО  
РОЛЕТЕС EM POLIURETANO "TR" PARA PORTA-PALETAS, NÚCLEO EM AÇO,  
COM LABERINTOS DE MATERIAL TERMOPLÁSTICO



CON LABIRINTI IN MATERIALE TERMOPLASTICO  
WITH PLASTIC LABYRINTHS  
MIT KUNSTSTOFF-LABYRINTHDICHTUNGEN  
AVEC LABYRINTHES EN MATIÈRE PLASTIQUE  
CON LABERINTOS DE MATERIAL PLÁSTICO  
ЛАБИРИНТАМИ ИЗ ТЕРМОПЛАСТИЧЕСКОГО МАТЕРИАЛА  
COM LABERINTOS DE MATERIAL TERMOPLÁSTICO

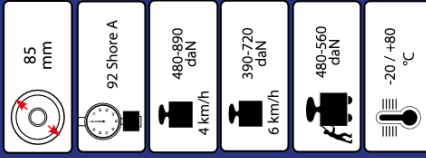
35-120 mm  
92 Shore A  
100-1150 daN  
4 km/h  
170-640 daN  
6 km/h  
130-510 daN  
-20/+80 °C

it RULLI TRASPALLET IN POLIURETANO "TR", NUCLEO IN ACCIAIO,  
CON LABIRINTI IN MATERIALE TERMOPLASTICO  
gb "TR" POLYURETHANE PALLET TRUCK ROLLERS WITH STEEL CENTRE,  
WITH POLYAMIDE PLASTIC LABYRINTHS  
d GABELHUBWAGENROLLEN AUS "TR" POLYURETHAN MIT STAHLRADKÖRPER,  
MIT KUNSTSTOFF-LABYRINTHDICHTUNGEN  
fr GALETS DE TRANSPALLETES EN POLYURETHANE "TR" AVEC CORPS EN ACIER,  
AVEC LABYRINTHES EN MATIÈRE PLASTIQUE  
es RODILLOS PARA TRANSPALETAS DE POLIURETANO "TR" CON NUCLEO DE ACERO,  
CON LABERINTOS DE MATERIAL PLÁSTICO  
ru РОЛКИ ДЛЯ ГИДРАВЛИЧЕСКИХ ТЕЛЕЖЕК ИЗ ПОЛИУРЕТАНА "TR"  
С ОСНОВАНИЕМ ИЗ СТАЛИ, С ЛАБИРИНТАМИ ИЗ ТЕРМОПЛАСТИЧЕСКОГО  
РОЛЕТЕС EM POLIURETANO "TR" PARA PORTA-PALETAS, NÚCLEO EM AÇO,  
COM LABERINTOS DE MATERIAL TERMOPLÁSTICO



CON LABIRINTI IN MATERIALE TERMOPLASTICO  
WITH PLASTIC LABYRINTHS  
MIT KUNSTSTOFF-LABYRINTHDICHTUNGEN  
AVEC LABYRINTHES EN MATIÈRE PLASTIQUE  
CON LABERINTOS DE MATERIAL PLÁSTICO  
ЛАБИРИНТАМИ ИЗ ТЕРМОПЛАСТИЧЕСКОГО МАТЕРИАЛА  
COM LABERINTOS DE MATERIAL TERMOPLÁSTICO

D	L	kg	CODE	F	Bearing type	Q	h	f	Static	4 km/h	6 km/h	Suggested for	
mm	mm			mm		mm	mm	mm	daN	daN	daN		
80	65	0,95	753101	20	6204 ZZ	70	47	20,5	650	360	530	350	
80	85	1,19	753102	20	6204 ZZ	90	47	20,5	850	420	670	450	
82	65	0,96	753103	20	6204 ZZ	70	47	20,5	650	380	530	350	
82	70	1,03	075802	20	6204 ZZ	75	47	20,5	700	400	560	375	Jungheinrich
82	80	1,15	753104	20	6204 ZZ	85	47	20,5	800	405	630	425	
82	85	1,22	753105	20	6204 ZZ	90	47	20,5	850	425	670	450	
82	95	1,34	753106	20	6204 ZZ	100	47	20,5	950	450	750	500	
82	100	1,41	075801	20	6204 ZZ	105	47	20,5	1000	460	800	540	Jungheinrich
85	59,5	0,95	075840	17	6303 ZZ	61,5	47	22	600	325	480	325	
85	60	0,93	075798	20	6204 ZZ	65	47	20,5	600	325	480	325	
85	60	0,89	075835	25	6005 ZZ	65	47	20,5	600	325	480	325	Jungheinrich
85	65	1,00	753107	20	6204 ZZ	70	47	20,5	650	390	530	350	
85	65	1,03	075812	17	6303 ZZ	70	47	20,5	650	390	530	350	
85	69	1,05	075790	20	6204 2RS	71	47	22	700	410	560	375	
85	70	1,06	075816	20	6204 ZZ	75	47	20,5	700	410	560	375	Linde, BT, Atlet, Jungheinrich
85	75	1,15	075708	17	6303 ZZ	77	47	22	750	410	590	400	
85	75	1,13	753108	20	6204 ZZ	80	47	20,5	750	410	590	400	Linde
85	75	1,09	753223	25	6005 ZZ	80	47	20,5	750	410	590	400	Jungheinrich
85	80	1,22	075821	17	6303 ZZ	82	47	22	800	430	630	425	Linde, Still
85	80	1,19	075807	20	6204 ZZ	85	47	20,5	800	430	630	425	Linde
85	80	1,15	075834	25	6005 ZZ	85	47	20,5	800	430	630	425	Jungheinrich
85	85	1,26	753109	20	6204 ZZ	90	47	20,5	850	440	670	450	Still
85	85	1,29	075827	17	6303 ZZ	90	47	20,5	850	440	670	450	Jungheinrich
85	85	1,22	075773	25	6005 ZZ	90	47	20,5	850	440	670	450	Jungheinrich
85	86,5	1,39	075837	17	6303 ZZ	89	47	21,9	850	440	670	450	Still
85	89	1,27	075791	20	6204 2RS	91	47	22	900	450	700	470	Jungheinrich
85	90	1,32	075826	20	6204 ZZ	95	47	20,5	900	450	700	470	Linde, BT
85	90	1,28	075947	25	6005 2RS	95	47	20,5	900	450	700	470	

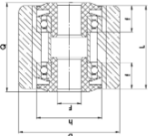


it RULLI IN POLIURETANO "TR" PER TRANSPALLET ELETTRICI, NUCLEO IN ACCIAIO,  
CON LABIRINTI IN MATERIALE TERMOPLASTICO  
gb "TR" POLYURETHANE ROLLERS FOR ELECTRIC PALLET TRUCKS,  
STEEL CENTRE, WITH PLASTIC LABYRINTHS

d ROLLEN AUS "TR" POLYURETHAN FÜR ELEKTRISCHE GABELHUGWAGEN  
MIT STAHLRADKÖRPER UND KUNSTSTOFF- LABYRINTDICHTUNGEN  
fr GALETS EN POLYURETHANE "TR" POUR TRANSPALLETES ÉLECTRIQUES  
AVEC CORPS EN ACIER ET LABYRINTHES EN MATIÈRE PLASTIQUE

es RODILLOS PARA TRANSPALETAS ELÉCTRICAS DE POLIURETANO "TR" ,  
NUCLEO DE ACERO, CON LABERINTOS DE MATERIAL PLÁSTICO

ru ПОЛИУРЕТАНОВЫЕ ВАЛКИ "TR" ДЛЯ ЭЛЕКТРИЧЕСКИХ ТЕЛЕЖЕК, СТАЛЬНОЙ  
ЯДЕР, С ЛАБИРИНТАМИ ИЗ ТЕРМОПЛАСТИЧЕСКОГО МАТЕРИАЛА  
pt ROLETES EM POLIURETANO "TR" PARA PORTA-PALETAS ELÉTRICOS, NÚCLEO EM  
AÇO, COM LABERINTOS DE MATERIAL TERMOPLÁSTICO



CON LABIRINTI IN MATERIALE TERMOPLASTICO  
WITH PLASTIC LABYRINTHS  
MIT KUNSTSTOFF- LABYRINTDICHTUNGEN  
AVEC LABYRINTHES EN MATIÈRE PLASTIQUE  
CON LABERINTOS DE MATERIAL PLÁSTICO  
ЛАБИРИНТАМИ ИЗ ТЕРМОПЛАСТИЧЕСКОГО МАТЕРИАЛА  
COM LABERINTOS DE MATERIAL TERMOPLÁSTICO

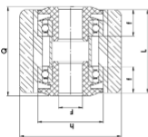
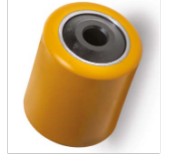
D	L	kg	CODE	kg	CODE	F	Bearing type	Q	h	f	Static	4 km/h	6 km/h	Suggested for
mm	mm					mm		mm	mm	mm	daN	daN	daN	
85	60	0,84	753151F12	0,54	755151	12	6006 2RS	65	55	22	600	400	480	390
85	60	0,84	753151F17	0,54	755151	17	6006 2RS	65	55	22	600	400	480	390
85	60	0,84	753151F20	0,54	755151	20	6006 2RS	65	55	22	600	400	480	390
85	60	0,82	753151F25	0,54	755151	25	6006 2RS	65	55	22	600	400	480	390
85	65	0,96	753152F12	0,65	755152	12	6006 2RS	70	55	22	650	400	530	430
85	65	0,95	753152F17	0,65	755152	17	6006 2RS	70	55	22	650	400	530	430
85	65	0,95	753152F20	0,65	755152	20	6006 2RS	70	55	22	650	400	530	430
85	65	0,94	753152F25	0,65	755152	25	6006 2RS	70	55	22	650	400	530	430
85	70	1,04	753153F12	0,72	755153	12	6006 2RS	75	55	22	700	450	560	450
85	70	1,03	753153F17	0,72	755153	17	6006 2RS	75	55	22	700	450	560	450
85	70	1,03	753153F20	0,72	755153	20	6006 2RS	75	55	22	700	450	560	450
85	70	1,02	753153F25	0,72	755153	25	6006 2RS	75	55	22	700	450	560	450
85	75	1,12	753154F12	0,79	755154	12	6006 2RS	80	55	22	750	450	590	480
85	75	1,11	753154F17	0,79	755154	17	6006 2RS	80	55	22	750	450	590	480
85	75	1,11	753154F20	0,79	755154	20	6006 2RS	80	55	22	750	450	590	480
85	75	1,10	753154F25	0,79	755154	25	6006 2RS	80	55	22	750	450	590	480
85	80	1,19	753155F12	0,86	755155	12	6006 2RS	85	55	22	800	500	630	510
85	80	1,19	753155F17	0,86	755155	17	6006 2RS	85	55	22	800	500	630	510
85	80	1,19	753155F20	0,86	755155	20	6006 2RS	85	55	22	800	500	630	510
85	80	1,18	753155F25	0,86	755155	25	6006 2RS	85	55	22	800	500	630	510
85	85	1,27	753156F12	0,92	755156	12	6006 2RS	90	55	22	850	500	670	540
85	85	1,26	753156F17	0,92	755156	17	6006 2RS	90	55	22	850	500	670	540
85	85	1,26	753156F20	0,92	755156	20	6006 2RS	90	55	22	850	500	670	540
85	85	1,25	753156F25	0,92	755156	25	6006 2RS	90	55	22	850	500	670	540

it RULLI IN POLIURETANO "TR" PER TRANSPALLET ELETTRICI, NUCLEO IN ACCIAIO,  
CON LABIRINTI IN MATERIALE TERMOPLASTICO  
gb "TR" POLYURETHANE ROLLERS FOR ELECTRIC PALLET TRUCKS,  
STEEL CENTRE, WITH PLASTIC LABYRINTHS

d ROLLEN AUS "TR" POLYURETHAN FÜR ELEKTRISCHE GABELHUGWAGEN  
MIT STAHLRADKÖRPER UND KUNSTSTOFF- LABYRINTDICHTUNGEN  
fr GALETS EN POLYURETHANE "TR" POUR TRANSPALLETES ÉLECTRIQUES  
AVEC CORPS EN ACIER ET LABYRINTHES EN MATIÈRE PLASTIQUE

es RODILLOS PARA TRANSPALETAS ELÉCTRICAS DE POLIURETANO "TR" ,  
NUCLEO DE ACERO, CON LABERINTOS DE MATERIAL PLÁSTICO

ru ПОЛИУРЕТАНОВЫЕ ВАЛКИ "TR" ДЛЯ ЭЛЕКТРИЧЕСКИХ ТЕЛЕЖЕК, СТАЛЬНОЙ  
ЯДЕР, С ЛАБИРИНТАМИ ИЗ ТЕРМОПЛАСТИЧЕСКОГО МАТЕРИАЛА  
pt ROLETES EM POLIURETANO "TR" PARA PORTA-PALETAS ELÉTRICOS, NÚCLEO EM  
AÇO, COM LABERINTOS DE MATERIAL TERMOPLÁSTICO



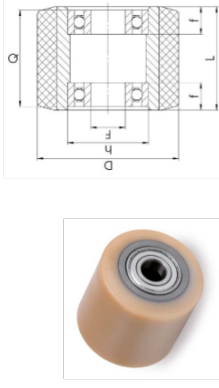
CON LABIRINTI IN MATERIALE TERMOPLASTICO  
WITH PLASTIC LABYRINTHS  
MIT KUNSTSTOFF- LABYRINTDICHTUNGEN  
AVEC LABYRINTHES EN MATIÈRE PLASTIQUE  
CON LABERINTOS DE MATERIAL PLÁSTICO  
ЛАБИРИНТАМИ ИЗ ТЕРМОПЛАСТИЧЕСКОГО МАТЕРИАЛА  
COM LABERINTOS DE MATERIAL TERMOPLÁSTICO

D	L	kg	CODE	kg	CODE	F	Bearing type	Q	h	f	Static	4 km/h	6 km/h	Suggested for
mm	mm					mm		mm	mm	mm	daN	daN	daN	
85	90	1,34	753157F12	0,99	755157	12	6006 2RS	95	55	22	900	525	700	560
85	90	1,34	753157F17	0,99	755157	17	6006 2RS	95	55	22	900	525	700	560
85	90	1,34	753157F20	0,99	755157	20	6006 2RS	95	55	22	900	525	700	560
85	90	1,33	753157F25	0,99	755157	25	6006 2RS	95	55	22	900	525	700	560
85	95	1,42	753158F12	1,06	755158	12	6006 2RS	100	55	22	950	525	750	610
85	95	1,41	753158F17	1,06	755158	17	6006 2RS	100	55	22	950	525	750	610
85	95	1,41	753158F20	1,06	755158	20	6006 2RS	100	55	22	950	525	750	610
85	95	1,40	753158F25	1,06	755158	25	6006 2RS	100	55	22	950	525	750	610
85	100	1,50	753159F12	1,13	755159	12	6006 2RS	105	55	22	1000	540	800	640
85	100	1,49	753159F17	1,13	755159	17	6006 2RS	105	55	22	1000	540	800	640
85	100	1,49	753159F20	1,13	755159	20	6006 2RS	105	55	22	1000	540	800	640
85	100	1,48	753159F25	1,13	755159	25	6006 2RS	105	55	22	1000	540	800	640
85	105	1,57	753160F12	1,19	755160	12	6006 2RS	110	55	22	1050	540	840	680
85	105	1,56	753160F17	1,19	755160	17	6006 2RS	110	55	22	1050	540	840	680
85	105	1,56	753160F20	1,19	755160	20	6006 2RS	110	55	22	1050	540	840	680
85	105	1,55	753160F25	1,19	755160	25	6006 2RS	110	55	22	1050	540	840	680
85	110	1,65	753161F12	1,26	755161	12	6006 2RS	115	55	22	1100	560	890	720
85	110	1,64	753161F17	1,26	755161	17	6006 2RS	115	55	22	1100	560	890	720
85	110	1,64	753161F20	1,26	755161	20	6006 2RS	115	55	22	1100	560	890	720
85	110	1,63	753161F25	1,26	755161	25	6006 2RS	115	55	22	1100	560	890	720

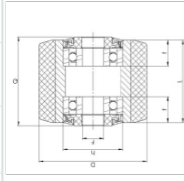




- it **RULLI TRANSPALLET IN VULKOLLAN®, NUCLEO IN ACCIAIO**
- gb **VULKOLLAN® PALLET TRUCK ROLLERS WITH STEEL CENTRE**
- d **GABELHUBWAGENROLLEN AUS VULKOLLAN® MIT STAHLRADKÖRPER**
- fr **GALETS DE TRANSPALETES EN VULKOLLAN® AVEC CORPS EN ACIER**
- es **RODILLOS PARA TRANSPALETAS DE VULKOLLAN® CON NUCLEO DE ACERO**
- ru **РОЛИКИ ДЛЯ ГИДРАВЛИЧЕСКИХ ТЕЛЕЖЕК ИЗ ВУЛКОЛЛАНА® С ОСНОВАНИЕМ ИЗ СТАЛИ**
- pt **ROLETES EM VULKOLLAN® PARA PORTA-PALETAS, NÚCLEO EM AÇO**



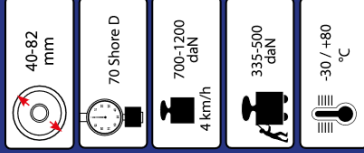
D	L	kg	CODE	F	Bearing type	Q	h	f	Static	4 km/h	6 km/h	Suggested for		
mm	mm			mm		mm	mm	mm	daN	daN	daN			
80	70	1.01	742202	20	6204-ZZ	70	47	14	1000	410	700	560		
80	90	1.26	742105	1.07	744105	90	47	14	1200	470	900	720		
85	40	0.68	742121	0.48	744121	20	6204-ZZ	40	47	14	575	250	400	320
85	70	1.07	742122	0.88	744122	20	6204-ZZ	70	47	14	1000	430	700	560
85	80	1.20	742123	1.01	744123	20	6204-ZZ	80	47	14	1050	460	800	640
85	80	1.17	742224	0.91	744224	25	6005-ZZ	80	52	15	1050	460	800	640
85	90	1.33	742125	1.14	744125	20	6204-ZZ	90	47	14	1200	480	900	720
85	100	1.47	742127	1.27	744127	20	6204-ZZ	100	47	14	1300	500	1000	800



CON LABIRINTI IN MATERIALE TERMOPLASTICO  
WITH PLASTIC LABYRINTHS  
MIT KUNSTSTOFF-LABYRINTHDICHTUNGEN  
AVEC LABYRINTHES EN MATIÈRE PLASTIQUE  
CON LABERINTOS DE MATERIAL PLÁSTICO  
ЛАБИРИНТАМИ ИЗ ТЕРМОПЛАСТИЧЕСКОГО МАТЕРИАЛА  
COM LABERINTOS DE MATERIAL TERMOPLÁSTICO



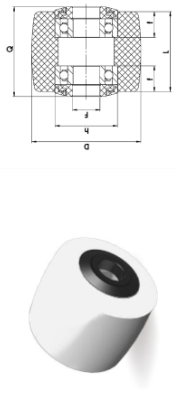
D	L	kg	CODE	F	Bearing type	Q	h	f	Static	4 km/h	6 km/h	Suggested for
mm	mm			mm		mm	mm	mm	daN	daN	daN	
80	65	0.95	743201	20	6204-ZZ	70	47	20.5	930	400	650	520
80	85	1.20	743202	20	6204-ZZ	90	47	20.5	1130	460	850	680
85	65	1.00	743203	20	6204-ZZ	70	47	20.5	930	410	750	600
85	75	1.14	743204	20	6204-ZZ	80	47	20.5	980	450	750	600
85	75	1.10	743224	25	6205-ZZ	80	47	20.5	980	450	750	600
85	85	1.27	743205	20	6204-ZZ	90	47	20.5	1130	470	850	680
85	95	1.40	743206	20	6204-ZZ	100	47	20.5	1230	490	950	760
85	110	1.78	074824	25	6205-ZZ	115	47	20.5	1300	500	1000	800



- it **RULLI TRANSPALLET MONOLITICI IN POLIAMMIDE 6**
- gb **POLYAMIDE 6 PALLET TRUCK ROLLERS**
- d **GABELHUBWAGENROLLEN AUS POLYAMID 6**
- fr **GALETS DE TRANSPALETES EN POLYAMIDE 6**
- es **RODILLOS PARA TRANSPALETAS DE POLIAMIDA 6**
- ru **ЛИТЫЕ РОЛИКИ ДЛЯ ГИДРАВЛИЧЕСКИХ ТЕЛЕЖЕК ИЗ ПОЛИАМИДА 6**
- pt **ROLETES EM POLIAMIDA 6 PARA PORTA-PALETAS**



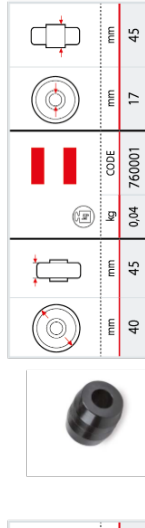
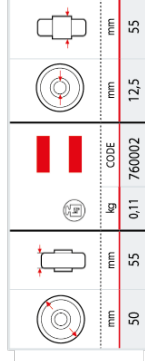
D	L	kg	CODE	F	Bearing type	Q	h	f	Static	4 km/h	Suggested for			
mm	mm			mm		mm	mm	mm	daN	daN				
82	60	0.44	763011	0.23	761011	20	6204-ZZ	60	47	14	1000	335	700	Jungheinrich
82	60	0.46	076639	0.24	076622	20	6204-ZRS	60	47	16	1000	335	700	
82	70	0.46	076607	0.26	761012	20	6204-ZRSX	70	47	14	1100	350	850	Still
82	70	0.49	763012	0.26	761012	20	6204-ZZ	70	47	14	1100	350	850	
82	90	0.54	763014	0.34	761014	20	6204-ZZ	90	47	14	1300	450	1100	
82	90	0.56	076670	0.34	761014	20	6204-ZZV	92	47	14	1300	450	1100	
82	100	0.60	763015	0.40	761015	20	6204-ZZV	100	47	14	1400	500	1200	BT, Jungheinrich, Mic

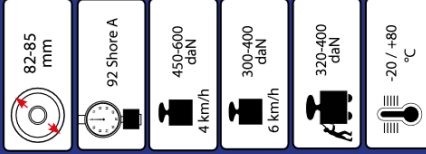


CON LABIRINTI IN MATERIALE TERMOPLASTICO  
WITH PLASTIC LABYRINTHS  
MIT KUNSTSTOFF-LABYRINTHDICHTUNGEN  
AVEC LABYRINTHES EN MATIÈRE PLASTIQUE  
CON LABERINTOS DE MATERIAL PLÁSTICO  
ЛАБИРИНТАМИ ИЗ ТЕРМОПЛАСТИЧЕСКОГО МАТЕРИАЛА  
COM LABERINTOS DE MATERIAL TERMOPLÁSTICO

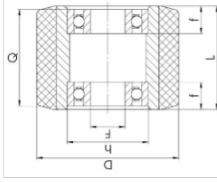


D	L	kg	CODE	F	Bearing type	Q	h	f	Static	4 km/h	Suggested for	
mm	mm			mm		mm	mm	mm	daN	daN		
82	60	0.46	076111	20	6204-ZRSX	67.5	47	19.5	1000	335	700	

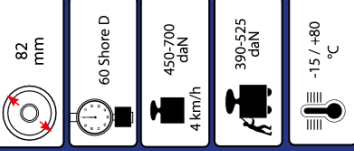




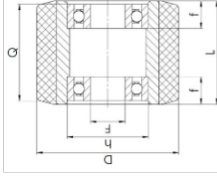
- it RULLI TRANSPALLET IN POLIURETANO "TR", NUCLEO IN POLIAMMIDE 6
- gb "TR" POLYURETHANE PALLET TRUCK ROLLERS WITH POLYAMIDE 6 CENTRE
- d GABELHUBWAGENROLLEN AUS "TR" POLYURETHAN MIT KERN AUS POLYAMID 6
- fr GALETS DE TRANSPALLETES EN POLYURETHANE "TR" AVEC CORPS EN POLYAMIDE 6
- es RODILLOS PARA TRANSPALETAS DE POLIURETANO "TR" CON NUCLEO DE POLIAMIDA 6
- ru РОЛЛИКИ ДЛЯ ГИДРАВЛИЧЕСКИХ ТЕЛЕЖЕК ИЗ ПОЛИУРЕТАНА "TR" С ОСНОВАНИЕМ ИЗ ПОЛИАМИДА 6
- pt ROLETES EM POLIURETANO "TR" PARA PORTA-PALETAS, NÚCLEO EM POLIAMIDA 6



D	L	kg	CODE	F	mm	Q	mm	h	mm	f	mm	Static	daN	4 km/h	daN	6 km/h	daN	Suggested for
82	70	0.42	772132	20	774132	70	47	14	14	14	14	550	300	450	300	300	300	Rôta
82	90	0.51	772135	20	774135	90	47	14	14	14	14	610	340	410	350	350	350	
82	100	0.56	772137	20	774137	100	47	14	14	14	14	700	380	600	400	400	400	
85	70	0.45	772122	20	774122	70	47	14	14	14	14	600	310	500	350	350	350	
85	90	0.76	772125	20	774125	90	47	14	14	14	14	700	350	600	400	400	400	



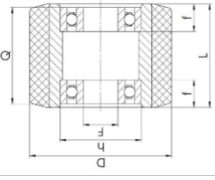
- it RULLI TRANSPALLET IN POLIURETANO TERMOPLASTICO, NUCLEO IN POLIAMMIDE 6
- gb THERMOPLASTIC POLYURETHANE PALLET TRUCK ROLLERS WITH POLYAMIDE 6 CENTRE
- d GABELHUBWAGENROLLEN AUS THERMOPLASTISCHEM POLYURETHAN MIT KERN AUS POLYAMID 6
- fr GALETS DE TRANSPALLETES EN POLYURETHANE TERMOPLASTIQUE AVEC CORPS EN POLYAMIDE 6
- es RODILLOS PARA TRANSPALETAS DE POLIURETANO TERMOPLASTICO CON NUCLEO DE POLIAMIDA 6
- ru РОЛЛИКИ ДЛЯ ГИДРАВЛИЧЕСКИХ ТЕЛЕЖЕК ИЗ ТЕРМОПЛАСТИЧНОГО ПОЛИУРЕТАНА С ОСНОВАНИЕМ ИЗ ПОЛИАМИДА 6
- pt ROLETES EM POLIURETANO TERMOPLASTICO PARA PORTA-PALETAS, NÚCLEO EM POLIAMIDA 6



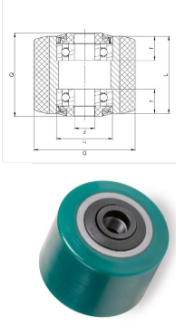
D	L	kg	CODE	F	mm	Q	mm	h	mm	f	mm	Static	daN	4 km/h	daN	4 km/h	daN
82	60	0.47	782101	20	784101	60	47	14	14	14	14	450	390	450	450	450	450
82	70	0.53	782102	20	784102	70	47	14	14	14	14	500	410	500	410	500	500
82	80	0.59	782103	20	784103	80	47	14	14	14	14	600	500	600	500	600	600
82	90	0.64	782104	20	784104	90	47	14	14	14	14	700	525	700	525	700	700



- it RULLI TRANSPALLET IN POLIURETANO ELASTICO "TR-ROLL", NUCLEO IN ACCIAIO
- gb "TR-ROLL" ELASTIC POLYURETHANE PALLET TRUCK ROLLERS WITH STEEL CENTRE
- d GABELHUBWAGENROLLEN AUS ELASTISCHEM "TR-ROLL" POLYURETHAN MIT STAHLRADKÖRPER
- fr GALETS DE TRANSPALLETES EN POLYURETHANE ELASTIQUE "TR-ROLL" AVEC CORPS EN ACIER
- es RODILLOS PARA TRANSPALETAS DE POLIURETANO ELASTICO "TR-ROLL" CON NUCLEO DE ACERO
- ru РОЛИКИ ДЛЯ ГИДРАВЛИЧЕСКИХ ТЕЛЕЖЕК ИЗ ПОЛИУРЕТАНА "TR-ROLL" С ОСНОВАНИЕМ ИЗ СТАЛИ
- pt ROLETES EM POLIURETANO ELASTICO "TR-ROLL" PARA PORTA-PALETAS, NUCLEO EM AÇO

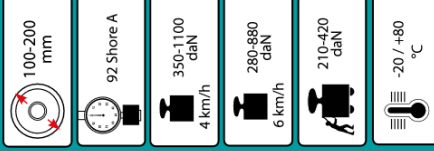


D	L	kg	COB.	F	Q	h	f	Static	4 km/h	6 km/h	
mm	mm			mm	mm	mm	mm	daN	daN	daN	
80	30	0,52	079022	20	6204-ZZ	30	47	14	300	200	160
80	60	0,69	079018			47	14	450	350	350	280
80	70	0,81	079006			47	14	520	400	450	360
80	90	1,25	792105	20	6204-ZZ	90	47	14	500	490	460
82	60	0,90	792121	20	6204-ZZ	60	47	14	500	400	320
82	70	1,03	792122	20	6204-ZZ	70	47	14	550	450	360
82	70	0,83	079014			47	16	550	450	450	360
82	90	1,28	792125	20	6204-ZZ	90	47	14	750	580	460
82	100	1,41	792127	20	6204-ZZ	100	47	14	850	620	520
82	100	1,20	079013			47	16	850	620	650	520
85	70	1,06	792132	20	6204-ZZ	70	47	14	550	450	360
85	80	1,19	792133	20	6204-ZZ	80	47	14	600	520	400
85	90	1,32	792135	20	6204-ZZ	90	47	14	750	580	460
85	100	1,40	792137	20	6204-ZZ	100	47	14	850	650	520



CON LABIRINTI IN MATERIALE TERMOPLASTICO  
WITH PLASTIC LABYRINTHS  
MIT KUNSTSTOFF-LABYRINTDICHTUNGEN  
AVEC LABYRINTHES EN MATIERE PLASTIQUE  
CON LABERINTOS DE MATERIAL PLÁSTICO  
ЛАБИРИНТАМИ ИЗ ТЕРМОПЛАСТИЧЕСКОГО МАТЕРИАЛА  
COM LABERINTOS DE MATERIAL TERMOPLÁSTICO

D	L	kg	CODE	F	Q	h	f	Static	4 km/h	6 km/h	
mm	mm			mm	mm	mm	mm	daN	daN	daN	
85	44	0,69	079007	25	6005-ZZ	46,4	47	18	350	280	290
85	110	1,54	079008	25	6005-ZZ	115	47	20,5	950	700	560



- it RUOTE STABILIZZATRICI IN POLIURETANO "TR-POWERHIGH", NUCLEO IN GHISA MECCANICA
- gb "TR-POWERHIGH" POLYURETHANE STABILISING WHEELS WITH CAST IRON CENTRE
- d "TR-POWERHIGH" POLYURETHAN STÜTZRÄDER MIT KERN AUS GUSSEISEN
- fr ROUES STABILISATRICES EN POLYURETHANE "TR-POWERHIGH" AVEC CORPS EN FONTE MECANIQUE
- es RUEDAS ESTABILIZADORAS DE POLIURETANO "TR-POWERHIGH" CON NUCLEO DE HIERRO FUNDIDO
- ru ОПОРНЫЕ КОЛЕСА ИЗ ПОЛИУРЕТАНА "TR-POWERHIGH" С ОСНОВАНИЕМ ИЗ МЕХАНИЧЕСКОГО ЧУГУНА
- pt RODAS ESTABILIZADORAS EM POLIURETANO "TR-POWERHIGH", NUCLEO EM FERRO FUNDIDO



D	L	kg	COB.	F	Q	h	f	Static	4 km/h	6 km/h	10 km/h
mm	mm			mm	mm	mm	mm	daN	daN	daN	daN
80	28	0,51	582151	0,46	584151	12	32	8	370	210	220
100	38	1,02	582152	0,91	584152	15	40	35	500	240	300
125	38	1,45	582153	1,34	584153	15	40	35	600	260	350
125	50	1,98	582163	1,76	584163	20	55	47	800	300	480
125	50	1,96	582363	1,76	584163	25	55	47	800	300	480
125	58	2,86	582103	2,62	584103	20	58	47	800	330	550
140	54	2,35	058012	2,11	058011	20	60	47	800	330	580
150	50	2,50	582154	2,28	584154	20	55	47	910	320	580
150	54	2,48	582174	2,28	584174	20	60	47	950	350	760
160	50	2,65	582158	2,43	584158	20	55	47	1000	375	950
200	50	3,65	582156	3,43	584156	20	55	47	1500	420	1100
200	50	3,65	582156	3,43	584156	20	55	47	1500	420	880









it RUOTE MOTRICI IN POLIURETANO "TR", NUCLEO IN GHISA MECCANICA

gb "TR" POLYURETHANE DRIVE WHEELS WITH CAST IRON CENTRE

d "TR" POLYURETHAN ANTRIEBSRÄDER MIT KERN AUS GUSSEISEN

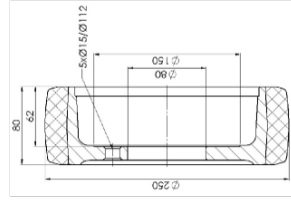
fr ROUES MOTRICES EN POLYURETHANE "TR" AVEC CORPS EN FONTE MECANIQUE

es RUEDAS MOTRIZES DE POLIURETANO "TR" CON NUCLEO DE HIERRO FUNDIDO

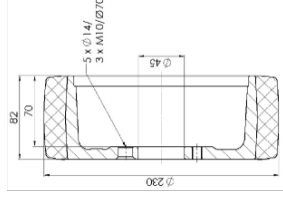
ru ПРИВОДНОЕ КОЛЕСА ИЗ ПОЛИУРЕТАНА "TR"

С ОСНОВАНИЕМ ИЗ МЕХАНИЧЕСКОГО ЧУГУНА

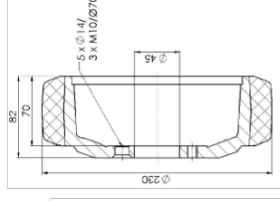
pt RODAS DE TRACÇÃO EM POLIURETANO "TR", NÚCLEO EM FERRO FUNDIDO



mm	mm	kg	CODE
250	80	7,24	064413
			Suggested for
			OM-Pneumatic Crown



mm	mm	kg	CODE
230	82	5,91	064665
			Suggested for
			Jungheinrich



mm	mm	kg	CODE
230	70	5,73	064673
			Suggested for
			Jungheinrich

it RUOTE MOTRICI IN POLIURETANO "TR", NUCLEO IN GHISA MECCANICA

gb "TR" POLYURETHANE DRIVE WHEELS WITH CAST IRON CENTRE

d "TR" POLYURETHAN ANTRIEBSRÄDER MIT KERN AUS GUSSEISEN

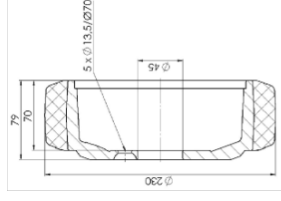
fr ROUES MOTRICES EN POLYURETHANE "TR" AVEC CORPS EN FONTE MECANIQUE

es RUEDAS MOTRIZES DE POLIURETANO "TR" CON NUCLEO DE HIERRO FUNDIDO

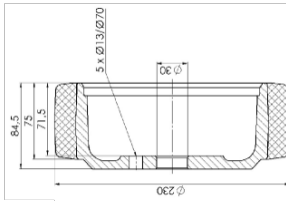
ru ПРИВОДНОЕ КОЛЕСА ИЗ ПОЛИУРЕТАНА "TR"

С ОСНОВАНИЕМ ИЗ МЕХАНИЧЕСКОГО ЧУГУНА

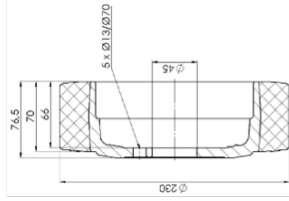
pt RODAS DE TRACÇÃO EM POLIURETANO "TR", NÚCLEO EM FERRO FUNDIDO



mm	mm	kg	CODE
230	70	5,47	064674
			Suggested for
			Jungheinrich



mm	mm	kg	CODE
230	75	6,80	064222
			Suggested for
			0.M.G. - Still



mm	mm	kg	CODE
230	70	4,80	064712
			Suggested for



it RUOTE MOTRICI IN POLIURETANO "TR", NUCLEO IN GHISA MECCANICA

gb "TR" POLYURETHANE DRIVE WHEELS WITH CAST IRON CENTRE

d "TR" POLYURETHAN ANTRIEBSRÄDER MIT KERN AUS GUSSEISEN

fr ROUES MOTRICES EN POLYURETHANE "TR"

AVEC CORPS EN FONTE MECANIQUE

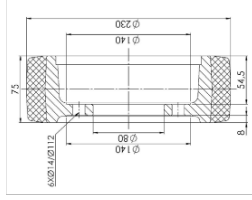
es RUEDAS MOTRIZES DE POLIURETANO "TR"

CON NUCLEO DE HIERRO FUNDIDO

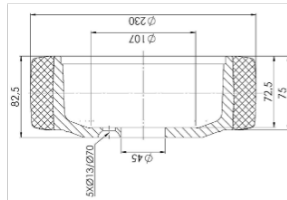
ru ПРИВОДНОЕ КОЛЕСА ИЗ ПОЛИУРЕТАНА "TR"

С ОСНОВАНИЕМ ИЗ МЕХАНИЧЕСКОГО ЧУГУНА

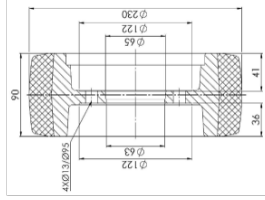
pt RODAS DE TRACÃO EM POLIURETANO "TR", NÚCLEO EM FERRO FUNDIDO



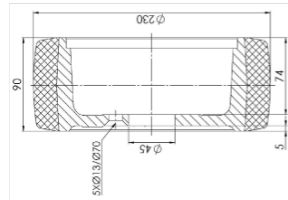
mm	mm	kg	CODE
230	75	6.64	064838
		Suggerimento	
		Pimpep-tole-Hyster	



mm	mm	kg	CODE
230	75	5.83	064839
		Suggerimento	
		Still Wagner	



mm	mm	kg	CODE
230	90	8.69	064836
		Suggerimento	
		Linde	



mm	mm	kg	CODE
230	90	7.28	064837
		Suggerimento	
		Linde	

it RUOTE MOTRICI IN POLIURETANO "TR-ROLL", NUCLEO IN GHISA MECCANICA

gb "TR-ROLL" POLYURETHANE DRIVE WHEELS WITH CAST IRON CENTRE

d "TR-ROLL" POLYURETHAN ANTRIEBSRÄDER MIT KERN AUS GUSSEISEN

fr ROUES MOTRICES EN POLYURETHANE "TR-ROLL"

AVEC CORPS EN FONTE MECANIQUE

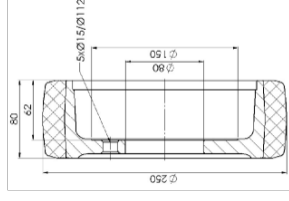
es RUEDAS MOTRIZES DE POLIURETANO "TR-ROLL"

CON NUCLEO DE HIERRO FUNDIDO

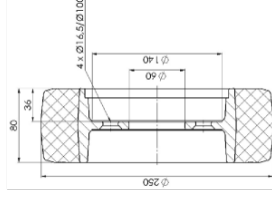
ru ПРИВОДНОЕ КОЛЕСА ИЗ ПОЛИУРЕТАНА "TR-ROLL"

С ОСНОВАНИЕМ ИЗ МЕХАНИЧЕСКОГО ЧУГУНА

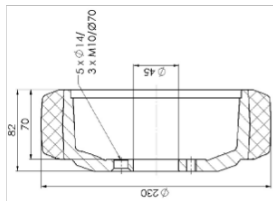
pt RODAS DE TRACÃO EM POLIURETANO "TR-ROLL", NÚCLEO EM FERRO FUNDIDO



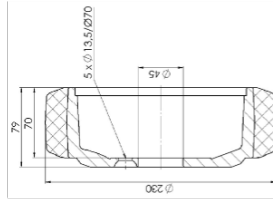
mm	mm	kg	CODE
250	80	7.24	062730



mm	mm	kg	CODE
250	80	6.17	062719



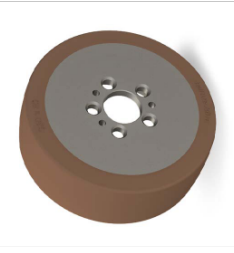
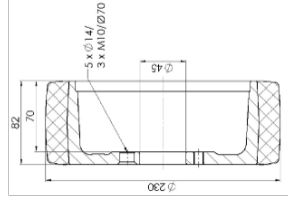
mm	mm	kg	CODE
230	70	5.03	062728



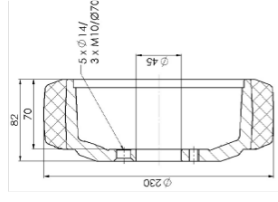
mm	mm	kg	CODE
230	70	5.02	062729

it RUOTE MOTRICI IN POLIURETANO "TR-POWERHIGH",  
 NUCLEO IN GHISA MECCANICA  
 gb "TR-POWERHIGH" POLYURETHANE DRIVE WHEELS  
 WITH CAST IRON CENTRE  
 d "TR-POWERHIGH" POLYURETHAN ANTRIEBSRÄDER  
 MIT KERN AUS GUSSEISEN  
 fr ROUES MOTRICES EN POLYURETHANE "TR-POWERHIGH"  
 AVEC CORPS EN FONTE  
 es RUEDAS MOTRIZES DE POLIURETANO "TR-POWERHIGH"  
 CON NUCLEO DE HIERRO  
 ru ПРИВОДНОЕ КОЛЕСА ИЗ ПОЛИУРЕТАНА "TR-POWERHIGH"  
 С ОСНОВАНИЕМ ИЗ МЕХАНИЧЕСКОГО ЧУГУНА  
 pt RODAS DE TRACÇÃO EM POLIURETANO "TR-POWERHIGH",  
 NÚCLEO EM FERRO FUNDIDO

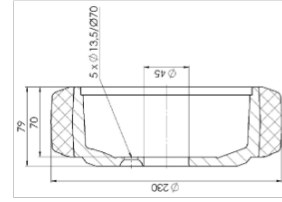
it  
 gb  
 d  
 fr  
 es  
 ru  
 pt



mm	230	mm	82	kg	5,91	CODE	580103
mm	45	mm		kg			



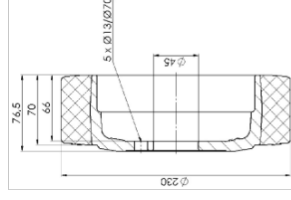
mm	230	mm	70	kg	5,73	CODE	580101
mm	45	mm		kg			



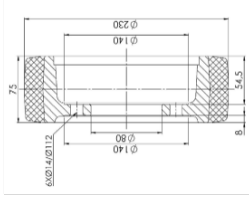
mm	230	mm	70	kg	5,47	CODE	580102
mm	45	mm		kg			

it RUOTE MOTRICI IN POLIURETANO "TR-POWERHIGH",  
 NUCLEO IN GHISA MECCANICA  
 gb "TR-POWERHIGH" POLYURETHANE DRIVE WHEELS  
 WITH CAST IRON CENTRE  
 d "TR-POWERHIGH" POLYURETHAN ANTRIEBSRÄDER  
 MIT KERN AUS GUSSEISEN  
 fr ROUES MOTRICES EN POLYURETHANE "TR-POWERHIGH"  
 AVEC CORPS EN FONTE  
 es RUEDAS MOTRIZES DE POLIURETANO "TR-POWERHIGH"  
 CON NUCLEO DE HIERRO  
 ru ПРИВОДНОЕ КОЛЕСА ИЗ ПОЛИУРЕТАНА "TR-POWERHIGH"  
 С ОСНОВАНИЕМ ИЗ МЕХАНИЧЕСКОГО ЧУГУНА  
 pt RODAS DE TRACÇÃO EM POLIURETANO "TR-POWERHIGH",  
 NÚCLEO EM FERRO FUNDIDO

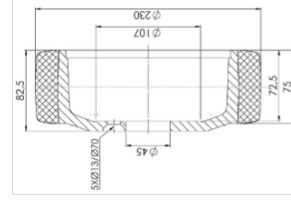
it  
 gb  
 d  
 fr  
 es  
 ru  
 pt



mm	230	mm	70	kg	4,80	CODE	580104
mm	45	mm		kg			



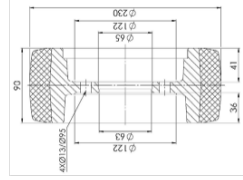
mm	230	mm	75	kg	6,64	CODE	580109
mm	45	mm		kg			



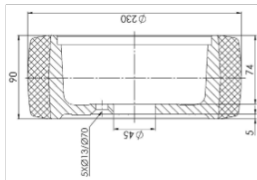
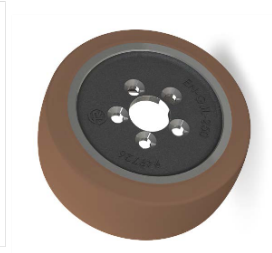
mm	230	mm	75	kg	5,83	CODE	580110
mm	45	mm		kg			

it RUOTE MOTRICI IN POLIURETANO "TR-POWERHIGH",  
NUCLEO IN GHISA MECCANICA  
gb "TR-POWERHIGH" POLYURETHANE DRIVE WHEELS  
WITH CAST IRON CENTRE  
d "TR-POWERHIGH" POLYURETHAN ANTRIEBSRÄDER  
MIT KERN AUS GUSSEISEN  
fr ROUES MOTRICES EN POLYURETHANE "TR-POWERHIGH"  
AVEC CORPS EN FONTE  
es RUEDAS MOTRIZES DE POLIURETANO "TR-POWERHIGH"  
CON NUCLEO DE HIERRO  
ru ПРИВОДНОЕ КОЛЕСА ИЗ ПОЛИУРЕТАНА "TR-POWERHIGH"  
С СОСЛОВИЕМ ИЗ МЕХАНИЧЕСКОГО ЧУГУНА  
pt RODAS DE TRACÇÃO EM POLIURETANO "TR-POWERHIGH",  
NÚCLEO EM FERRO FUNDIDO

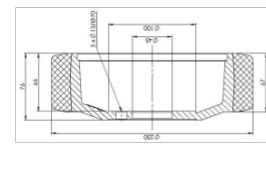
it SOLUZIONI PERSONALIZZATE  
gb CUSTOMISED SOLUTIONS  
d SONDERLÖSUNGEN  
fr SOLUTIONS PERSONNALISEES  
es MODELOS PERSONALIZADOS  
ru ИНДИВИДУАЛЬНЫЕ РЕШЕНИЯ  
pt MODELOS PERSONALIZADOS



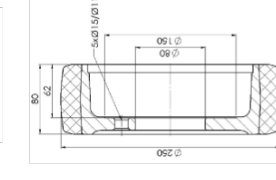
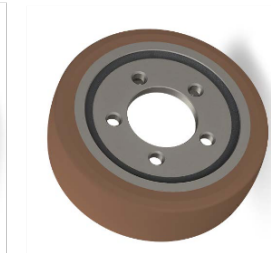
mm	230	mm	90	kg	8,69	CODE	580107
mm		mm		kg		CODE	



mm	230	mm	90	kg	7,28	CODE	580108
mm		mm		kg		CODE	



mm	230	mm	66,8	kg	5,05	CODE	580105
mm		mm		kg		CODE	



mm	250	mm	80	kg	7,24	CODE	580106
mm		mm		kg		CODE	



it **VARIANTI DISPONIBILI SU RICHIESTA**

Cuscinetti a sfera tipo 2RS e ZV

Cuscinetti a sfera in acciaio inox

Ruote e rulli con dimensioni personalizzate

gb **OPTIONS AVAILABLE ON ORDER**

Ball bearings type 2RS and ZV

Stainless steel ball bearings

Wheels and rollers with customised dimensions

d **AUF ANFRAGE VERFÜGBARE VARIANTEN**

Kugellager Typ 2RS und ZV

Edelstahlkugellager

Räder und Rollen mit personalisierten Maßen

fr **VARIANTES DISPONIBLES SUR COMMANDE**

Roulement à billes type 2RS et ZV

Roulement à billes en acier inox

Roues et galets avec dimensions personnalisées

es **VERSIONES DISPONIBLES BAJO PEDIDO**

Cojinete a bolas tipo 2RS y ZV

Cojinete de bolas de acero inox

Ruedas y rodillos con dimensiones personalizadas

ru **ДОСТУПНЫ ВАРИАНТЫ ПО ЗАКАЗУ**

Шарикоподшипники типа 2RS и ZV

Шарикоподшипники из нержавеющей стали

Ролики и колёса с индивидуальными размерами

pt **VARIANTES**

**Rolamento de esferas tipo 2RS e ZV**

**Rolamento de esferas de aço inox**

**Rodas e roletes com dimensões personalizadas**

it **LEGENDA**

gb **SYMBOLS**



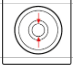
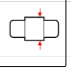
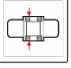
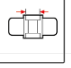
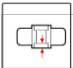









d **ZEICHENERKLÄRUNG**

fr **LEGENDE**

es **LEYENDA**

ru **ЛЕГЕНДА**

pt **LEGENDA**

 <b>Diametro ruota</b> Wheel diameter Radurchmesser Diamètre roue Diámetro rueda Диаметр колеса Diámetro da Roda	 <b>Larghezza ruota</b> Wheel width Radbreite Largeur de la roue Ancho bandaje Largura da Roda	 <b>Diametro foro</b> Hub bore diameter Bohrungsdurchmesser Alésage Диаметр ступицы Diámetro do Furo
 <b>Lunghezza mozzo</b> Hub length Nabellänge Longueur du moyeu Ancho buje Длина ступицы Largura do núcleo	 <b>Quota di montaggio</b> Assembly dimensions Einspannlänge Longueur de serrage Dimensiones de montaje Монтажные размеры Dimensões de montagem	 <b>Diametro sede cuscinetti</b> Ball bearing seat diameters Kugellagerstützdurchm. Diamètre de la siège Diám. alojam. cojinetes Диаметр посадочных мест подшипников Diámetro da sede p/ rolamentos
 <b>Profondità sede cuscinetti</b> Ball bearing seat depth Kugellagerstütztiefe Profondeur de la siège Prof. alojam. cojinetes Глубина посадочных мест Profundidade da sede p/ rolamentos		
 <b>Mozzo con cuscinetti a sfera</b> Hub with ball bearings Nabe mit Kugellager Moyeu avec roulement à billes Buje con cojinete a bolas Нúcleo com rolamento de esferas	 <b>Mozzo con sede cuscinetti</b> Hub with ball bearing facilities Nabe mit Lagerstütz Logement pour roulements Alojamiento para cojinete a bolas Ступица без подшипника	 <b>Carico statico</b> Static load Statische Last Charge statique Carga estática Статическая нагрузка Carga estática
 <b>Portata a 4 km/h</b> Load capacity at 4 km/h Tragkraft bei 4 km/h Capacité de charge à 4 km/h Capacidad de carga a 4 km/h Выносливость в 4 км/ч	 <b>Portata a 6 km/h</b> Load capacity at 6 km/h Tragkraft bei 6 km/h Capacité de charge à 6 km/h Capacidad de carga a 6 km/h Выносливость в 6 км/ч	 <b>Scorevolezza</b> Rolling resistance Rollwiderstand Glissement Facilidad de deslizamiento Скорость качения Facilidad de deslizamento
 <b>Peso</b> Weight Gewicht Poids Peso Вес Peso	 <b>Temperatura</b> Temperature Temperatur Température Temperatura Temperatura Temperatura	 <b>Durezza</b> Hardness Härte Dureté Dureza Твёрдость Durezza



SEE WEBSITE



### Tellure Rôta

Via Quattro Passi 15 • 41043 Formigine (MO)  
Tel. Italia: 059 410300-306 • Tel. Export: 0039 059 410231-253  
Fax 059 572859  
[comm.italia@tellurerota.com](mailto:comm.italia@tellurerota.com) • [comm.estero@tellurerota.com](mailto:comm.estero@tellurerota.com)  
[www.tellurerota.com](http://www.tellurerota.com)



### TR Lab

Via Aldo Moro, 14/G-H • 41043 Formigine (MO)  
Tel. 059 410271  
Fax 059 573167  
[info@trlab.it](mailto:info@trlab.it)  
[www.trlab.it](http://www.trlab.it)



UNI EN ISO 9001:2015



UNI EN ISO 14001:2015



UNI EN ISO 45001:2018