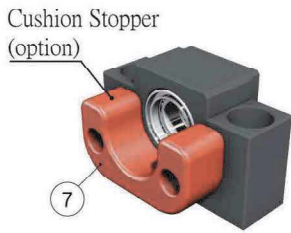


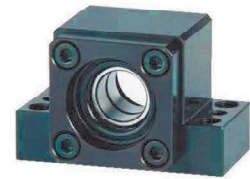
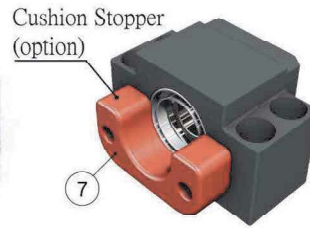
## Support Unit AK (fixed-side rectangular type)



AK10~AK15

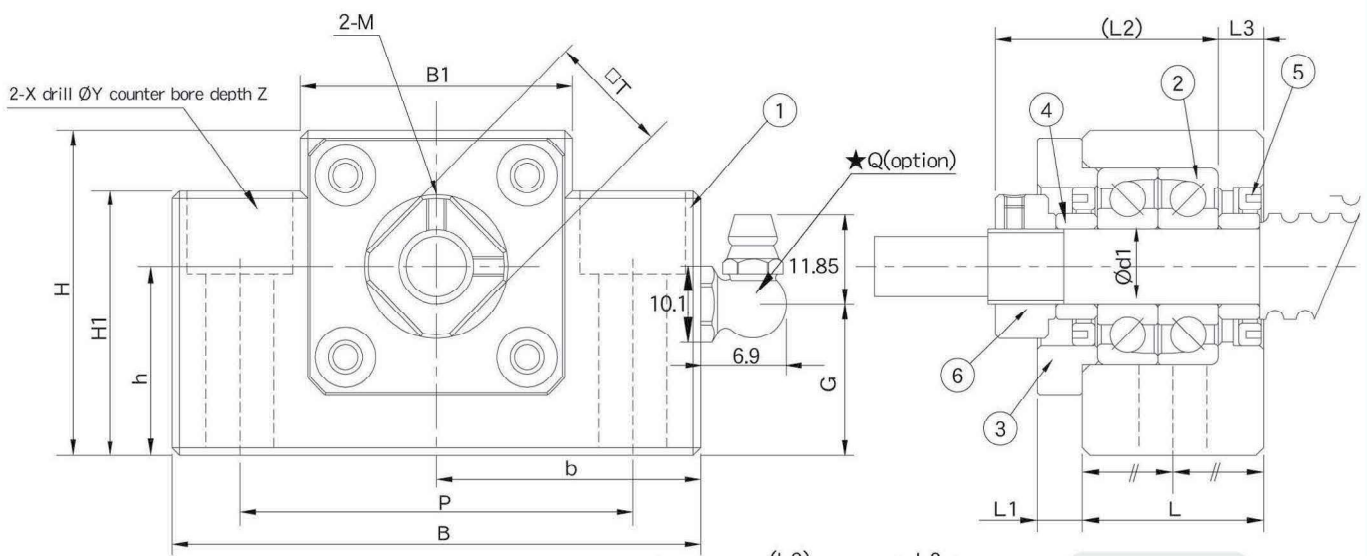


AK20



AK25

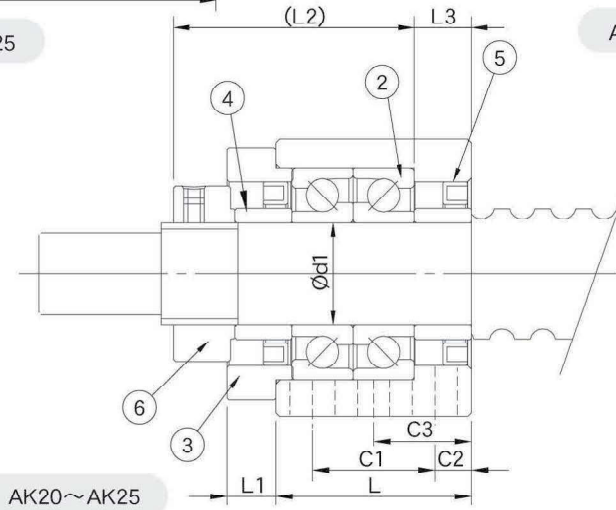
AK



AK10~AK25

AK10~AK15

No.	Part name	Qty
1	Housing	1
2	Bearing	1 set
3	Holding lid	1
4	Collar	2
5	Seal	2
6	Lock nut	1set
7	Cushion Stopper (option)	1



AK20~AK25

Unit : mm

Model No.	Shaft diameter d1	L	L1	L2	L3	B	H	b	h	B1	H1	P	X	Y	Z	M	T	C1	C2	C3	G	Q	Weight (Kgs)
								±0.02	±0.02														
AK10	10	24	6	29.5	6	70	43	35	25	36	35	52	9	14	11	M3	16	-	-	-	20	M6	0.5
AK12	12	24	6	29.5	6	70	43	35	25	36	35	52	9	14	11	M4	19	-	-	-	20	M6	0.5
AK15	15	25	6	36	5	80	50	40	30	41	40	60	11	17	15	M4	22	-	-	-	21	M6	0.62
AK20	20	42	10	50	10	95	58	47.5	30	56	45	75	11	17	15	M4	30	22	10	-	24	M6	1.43
AK25	25	48	12	59	14	105	68	52.5	35	66	25	85	11	-	-	M5	35	30	9	24	58	-	1.92

# Support Unit AK (fixed-side rectangular type)

Order Code	Model No.	Surface treatment	Applicable ballscrew accuracy grade	Bearing		Delivery date	Image
				Model No.	Max. Starting torque (gf-cm)		
AK10	AK10	Black Oxide	C3 ~ C10	7000A P5	190	EX-STOCK	 <p>★Q option</p>
AK10_C5			C5 ~ C10	7000A P0	190	EX-STOCK	
AK10_C3			C3	7000A P5	190	EX-STOCK	
AK10_N		Electroless Nickel Plating	C3 ~ C10	7000A P5	190	3 days	
AK10_C5N			C5 ~ C10	7000A P0	190	3 days	
AK10_C3N			C3	7000A P5	190	3 days	
AK12	AK12	Black Oxide	C3 ~ C10	7001A P5	210	EX-STOCK	 <p>★Q option</p>
AK12_C5			C5 ~ C10	7001A P0	210	EX-STOCK	
AK12_C3			C3	7001A P5	210	EX-STOCK	
AK12_N		Electroless Nickel Plating	C3 ~ C10	7001A P5	210	EX-STOCK	
AK12_C5N			C5 ~ C10	7001A P0	210	3 days	
AK12_C3N			C3	7001A P5	210	3 days	
AK15	AK15	Black Oxide	C3 ~ C10	7002A P5	230	EX-STOCK	 <p>★Q option</p>
AK15_C5			C5 ~ C10	7002A P0	230	EX-STOCK	
AK15_C3			C3	7002A P5	230	EX-STOCK	
AK15_N		Electroless Nickel Plating	C3 ~ C10	7002A P5	230	EX-STOCK	
AK15_C5N			C5 ~ C10	7002A P0	230	3 days	
AK15_C3N			C3	7002A P5	230	3 days	
AK20	AK20	Black Oxide	C3 ~ C10	7204A P5	550	EX-STOCK	 <p>★Q option</p>
AK20_C5			C5 ~ C10	7204A P0	550	EX-STOCK	
AK20B_C5			C5 ~ C10	7204B P0	550	EX-STOCK	
AK20_C3			C3	7204A P5	550	3 days	
AK20_N		Electroless Nickel Plating	C3~10	7204A P5	550	3 days	
AK20_C5N			C5 ~ C10	7204A P0	550	3 days	
AK20B_C5N			C5 ~ C10	7204B P0	550	3 days	
AK20_C3N			C3	7204A P5	550	3 days	
AK25	AK25	Black Oxide	C3~10	7205A P5	730	EX-STOCK	 <p>★Q option</p>
AK25_C5			C5 ~ C10	7205A P0	730	EX-STOCK	
AK25B_C5			C5 ~ C10	7205B P0	730	3 days	
AK25_C3			C3	7205A P5	730	3 days	
AK25_N		Electroless Nickel Plating	C3~10	7205A P5	730	EX-STOCK	
AK25_C5N			C5 ~ C10	7205A P0	730	3 days	
AK25B_C5N			C5 ~ C10	7205B P0	730	3 days	
AK25_C3N			C3	7205A P5	730	3 days	

Note :

1. All types make Preload.
2. All of bearings use Japanese & Taiwanese brand bearings(Model No. in blue), Assembly by DF way. The most suitable way for ballscrew use.
3. The standard type is without Q , if required, please advise in advance.