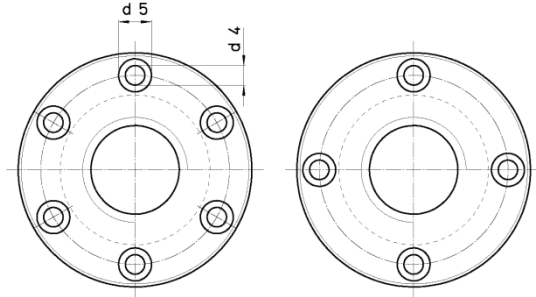
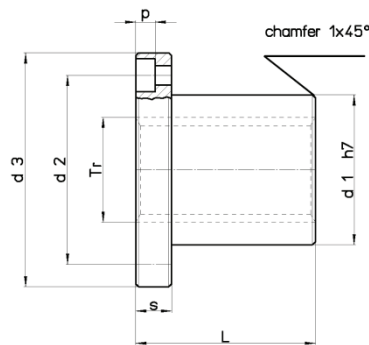


## PEREMES BRONZ ANYA FLANGED BRONZE NUT

**Anyag** bronz  
**Material** bronze

**Hegeszthetőség** ---  
**Weldable** ---

**Típus** FTN (79.015)  
**Type** FXN (79.023)  
FFR (79.024)



≥ Tr 24x5 (79.015 ; 79.023)  
Tr 10x2 - 50x8 (79.024) ≤ Tr 22x5 (79.015 ; 79.023)

Cikkszám code		Ø x emelkedés Ø x lead	Bekezd. Thread starts	d1 mm	d2 mm	d3 mm	d4 mm	d5 mm	p mm	L mm	s mm	Tömeg Weight (kg)	At* mm <sup>2</sup>
jobb right	bal left												
79.024.009	79.024.007	Tr 10x2	1	25	34	42	5,0	--	--	25	10	0,016	250
79.015.004	79.015.002	Tr 10x3	1	18	26	37	4,5	7,5	4,2	22	8	0,088	294
79.015.015	79.015.012	Tr 12x3	1	18	26	37	4,5	7,5	4,2	22	8	0,082	362
79.024.014	79.024.011	Tr 12x3	1	28	38	48	6,0	--	--	35	12	0,276	400
79.023.019	---	Tr 12x6 (P3)	2	18	26	37	4,5	7,5	4,2	22	8	0,082	362
79.024.032	79.024.029	Tr 14x3	1	28	38	48	6,0	--	--	35	12	0,272	460
79.015.024	79.015.021	Tr 14x4	1	20	30	42	5,5	9	5,2	25	10	0,123	470
79.015.039	79.015.036	Tr 16x4	1	22	32	45	5,5	9	5,2	30	10	0,149	660
79.024.038	79.024.035	Tr 16x4	1	28	38	48	6,0	--	--	35	12	0,260	530
79.023.043	---	Tr 16x8 (P4)	2	22	32	45	5,5	9,5	5,2	30	10	0,149	660
79.015.048	79.015.045	Tr 18x4	1	25	35	48	5,5	9	5,2	35	10	0,188	880
79.015.057	79.015.054	Tr 20x4	1	30	40	52	5,5	9	5,2	40	10	0,267	1130
79.024.056	79.024.053	Tr 20x4	1	32	45	55	6,5	--	--	44	12	0,370	870
79.023.061	---	Tr 20x8 (P4)	2	30	40	52	5,5	9,5	5,2	40	10	0,267	1130
79.023.064	---	Tr 20x20 (P5)	4	30	40	52	5,5	9,5	5,2	40	10	0,270	1100
79.015.069	79.015.066	Tr 22x5	1	30	40	52	5,5	9	5,2	40	10	0,247	1225
79.024.068	79.024.065	Tr 22x5	1	32	45	55	6,5	--	--	44	12	0,360	1030
79.023.079	79.023.076	Tr 24x5	1	35	48	62	6,5	11,0	6,5	45	12	0,408	1520
79.024.077	79.024.074	Tr 24x5	1	32	45	55	6,5	--	--	44	12	0,337	1040
79.015.087	79.015.084	Tr 25x5	1	35	48	62	6,5	11	6,5	45	12	0,393	1590
79.023.091	---	Tr 25x10 (P5)	2	35	48	62	6,5	11	6,5	45	12	0,393	1590
79.023.094	---	Tr 25x25 (P5)	5	35	48	62	6,5	11	6,5	45	12	0,393	1590
79.015.111	79.015.108	Tr 28x5	1	40	53	68	6,5	11	6,5	50	12	0,532	2000
79.023.115	---	Tr 28x10 (P5)	2	40	53	68	6,5	11	6,5	50	12	0,532	2000
79.015.117	79.015.118	Tr 30x3	1	40	53	68	6,5	11	6,5	50	12	0,482	2238
79.015.120	79.015.124	Tr 30x4	1	40	53	68	6,5	11	6,5	50	12	0,487	2200
79.015.127	79.015.130	Tr 30x5	1	40	53	68	6,5	11	6,5	50	12	0,492	2160



Cikkszám code		Ø x emelkedés Ø x lead	Bekezd. Thread starts	d1 mm	d2 mm	d3 mm	d4 mm	d5 mm	p mm	L mm	s mm	Tömeg Weight (kg)	At* mm <sup>2</sup>
jobb right	bal left												
79.015.136	79.015.133	Tr 30x6	1	40	53	68	6.5	11	6.5	50	12	0.497	2120
79.024.135	79.024.132	Tr 30x6	1	38	50	62	6,5	--	--	46	14	0,472	1370
79.023.140	---	Tr 30x12 (P6)	2	40	53	68	6.5	11	6.5	50	12	0.497	2120
79.023.143	---	Tr 30x30 (P5)	6	40	53	68	6.5	11	6.5	50	12	0,492	2590
79.023.149	79.023.146	Tr 32x6	1	40	53	68	6.5	11	6.5	50	12	0,455	2277
79.024.147	79.024.144	Tr 32x6	1	45	58	70	6,5	--	--	54	16	0,078	1710
79.015.154	79.015.157	Tr 35x3	1	50	63	78	8.5	14	8.5	60	15	0.862	3160
79.015.160	79.015.163	Tr 35x4	1	50	63	78	8.5	14	8.5	60	15	0.869	3110
79.015.166	79.015.169	Tr 35x5	1	50	63	78	8.5	14	8.5	60	15	0.876	3060
79.015.175	79.015.172	Tr 35x6	1	50	63	78	8.5	14	8.5	60	15	0.883	3015
79.015.178	---	Tr 35x8	1	50	63	78	8.5	14	8.5	60	15	0.898	2920
79.024.183	79.024.180	Tr 36x6	1	45	58	70	6,5	--	--	54	16	0,694	1950
79.023.185	79.023.182	Tr 36x6	1	50	63	78	8,5	14,0	8,5	60	15	0,854	3110
79.015.190	79.015.193	Tr 40x3	1	55	68	84	8.5	14	8.5	65	15	1.030	3930
79.015.196	79.015.199	Tr 40x4	1	55	68	84	8.5	14	8.5	65	15	1.039	3880
79.015.202	79.015.205	Tr 40x5	1	55	68	84	8.5	14	8.5	65	15	1.048	3828
79.015.226	---	Tr 40x6	1	55	68	84	8.5	14	8.5	65	15	1.057	3778
79.015.211	79.015.208	Tr 40x7	1	55	68	84	8.5	14	8.5	65	15	1.066	3727
79.024.210	79.024.207	Tr 40x7	1	63	78	95	8,5	--	--	66	16	1,788	2650
79.015.223	---	Tr 40x8	1	55	68	84	8.5	14	8.5	65	15	1.075	3675
79.023.215	---	Tr 40x14 (P7)	2	55	68	84	8,5	14,0	8,5	65	15	1,066	3727
79.023.218	---	Tr 40x40 (P8)	5	55	65	84	8,5	14,0	8,5	65	15	1,075	3675
79.023.233	79.023.230	Tr 44x7	1	55	72	90	8,5	14,0	8,5	65	15	1,029	4135
79.024.231	79.024.228	Tr 44x7	1	63	78	95	8,5	--	--	66	16	1,657	2940
79.015.238	79.015.235	Tr 45x8	1	55	72	90	8.5	14	8.5	65	15	0.999	4186
79.015.241	79.015.244	Tr 50x3	1	65	80	100	10.5	17	10.5	80	20	1.679	6095
79.015.247	79.015.250	Tr 50x4	1	65	80	100	10.5	17	10.5	80	20	1.693	6030
79.015.253	79.015.256	Tr 50x5	1	65	80	100	10.5	17	10.5	80	20	1.707	5970
79.015.262	79.015.259	Tr 50x8	1	65	80	100	10.5	17	10.5	80	20	1.749	5780
79.024.261	79.024.258	Tr 50x8	1	72	90	110	10,5	--	--	75	18	2,500	4540
79.015.268	---	Tr 55x9	1	65	80	100	10.5	17	10.5	80	20	1.475	6345
79.015.311	79.015.317	Tr 60x6	1	75	95	120	12.5	19	12.5	100	25	2.865	8950
79.015.312	79.015.318	Tr 60x7	1	75	95	120	12.5	19	12.5	100	25	2.886	8875
79.015.274	79.015.271	Tr 60x9	1	75	95	120	12.5	19	12.5	100	25	2.927	8718

\* Az orsó és az anya közötti érintkezési felület Contact surface between the screw and nut